

LAND USE SCHEDULE				
BLOCKS/LOTS	DESCRIPTION	AREA (ha)	AREA (Acres)	# UNITS
1 - 3, 5 - 60, 64 - 67, 70 - 146, 148 - 184	SINGLE DETACHED DWELLINGS	6.000	14.825	177
4, 61 - 63, 68, 69, 147	SEMI DETACHED DWELLINGS	0.471	1.164	14
185	TOWNHOUSE DWELLINGS	0.816	2.016	31
186	OPEN SPACE WALKWAY	0.055	0.136	
187, 188	LINKAGE	1.060	2.619	
189 - 191	STORMWATER MANAGEMENT	1.067	2.637	
192 - 196	OPEN SPACE [GAS EASEMENT]	0.585	1.446	
197	NEIGHBOURHOOD TRAIL	0.016	0.040	
198, 199	0.3m RESERVE	0.002	0.005	
200	ROAD WIDENING	0.046	0.114	
STREETS "A", "B", "C", "D", & "E"	PUBLIC R.O.W.	3.333	8.236	
TOTAL		13.451	33.238	222

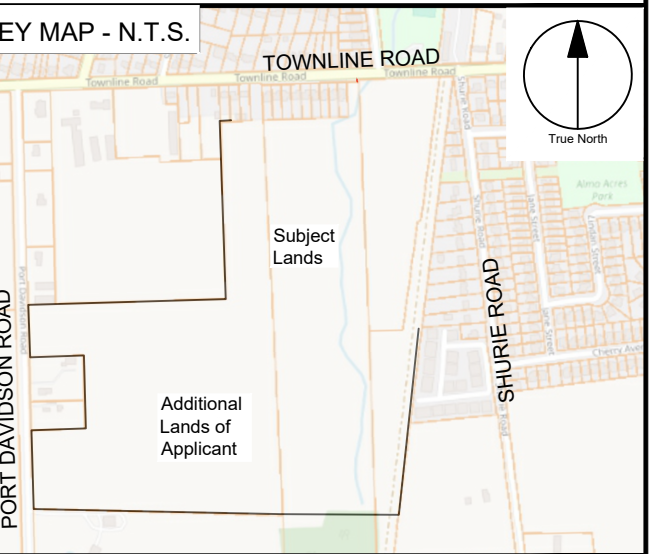
NOTE:
THE FOLLOWING LOTS AND OR BLOCKS ARE JOINTLY OWNED BY LOCKBRIDGE DEVELOPMENT INC. AND TEK CORPORATION:
LOTS 87, 90, 127, 130, 164, 165, 168 AND BLOCK 189 (SWM)

DRAFT PLAN OF SUBDIVISION SMITHVILLE BLOCK 9

PART OF LOTS 31 & 32,
CONCESSION 6 AND PART OF THE
ROAD ALLOWANCE BETWEEN LOTS
31 & 32, GEOGRAPHIC TOWNSHIP
OF GAINSBOROUGH, TOWNSHIP OF
WEST LINCOLN, REGIONAL
MUNICIPALITY OF NIAGARA

COPYRIGHT
This drawing has been prepared solely for the intended use, and any reproduction or distribution for any purpose other than authorized by Arcadis is forbidden. Within dimensions shall have precedence over scaled dimensions. Contractors shall verify and be responsible for all dimensions and conditions on the job, and Arcadis shall be informed of any variations from the dimensions and conditions shown on the drawing. Shop drawings shall be submitted to Arcadis for general conformance before proceeding with fabrication.

Arcadis Professional Services (Canada) Inc.
a part of Arcadis



INFORMATION REQUIRED
UNDER SECTION 51 (17) OF THE PLANNING ACT, R.S.O. 1990, c.P.13 AS AMENDED

- (a) - AS SHOWN
- (b) - AS SHOWN
- (c) - AS SHOWN
- (d) - AS LISTED IN THE LAND USE SCHEDULE
- (e) - AS SHOWN
- (f) - AS SHOWN
- (f1) - AS SHOWN
- (g) - AS SHOWN
- (h) - MUNICIPAL WATER
- (i) - LACUSTRINE SILTY/HEAVY CLAY
- (j) - AS SHOWN
- (k) - MUNICIPAL SANITARY AND STORM SEWERS
- (l) - GAS EASEMENT

SURVEYOR'S CERTIFICATE
I HEREBY CERTIFY THAT THE BOUNDARIES OF THE LANDS TO BE SUBDIVIDED ON THIS PLAN AND THEIR RELATIONSHIP TO THE ADJACENT LANDS ARE ACCURATELY AND CORRECTLY SHOWN.

SIGNED:
ROY S. KIRILUK, ONTARIO LAND SURVEYOR
J.D. BARNES LIMITED
DATE: Aug 12 2024

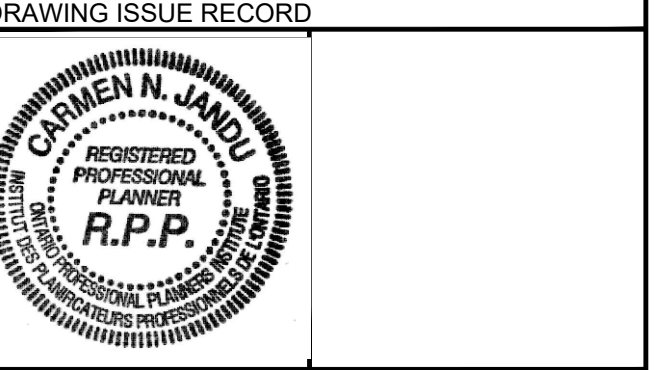
OWNER'S CERTIFICATE
I HEREBY CONSENT TO THE FILING OF THIS PLAN BY ARCADIS IN DRAFT FORM.

SIGNED:
DON MANSON
LOCKBRIDGE DEVELOPMENT INC.
DATE: Aug 12 2024

SIGNED:
JUDY HENDLER
DATE: Aug 12 2024

SIGNED:
THEODORE KINGMA
TEK CORPORATION
DATE: 08/08/24

No.	DESCRIPTION	DATE
02	2nd DPS SUBMISSION	2025-11-04
01	1st DPS SUBMISSION	2024-08-13



APPROVALS

ARCADIS
360 James Street North - Suite 200
Hamilton ON L8L 1H5 Canada
tel 905 546 1010
www.arcadis.com

SCALE: 1:1000 (m)

PROJECT NO:
144262

DRAWN BY:
M. ROJAS

PROJECT MGR:
J. MARCUS

CHECKED BY:
J. MARCUS

APPROVED BY:
C. JANDU

SHEET TITLE
DRAFT PLAN OF SUBDIVISION

SHEET NUMBER
DPS1.0

ISSUE
02

