

Signum Wireless Towers Inc.

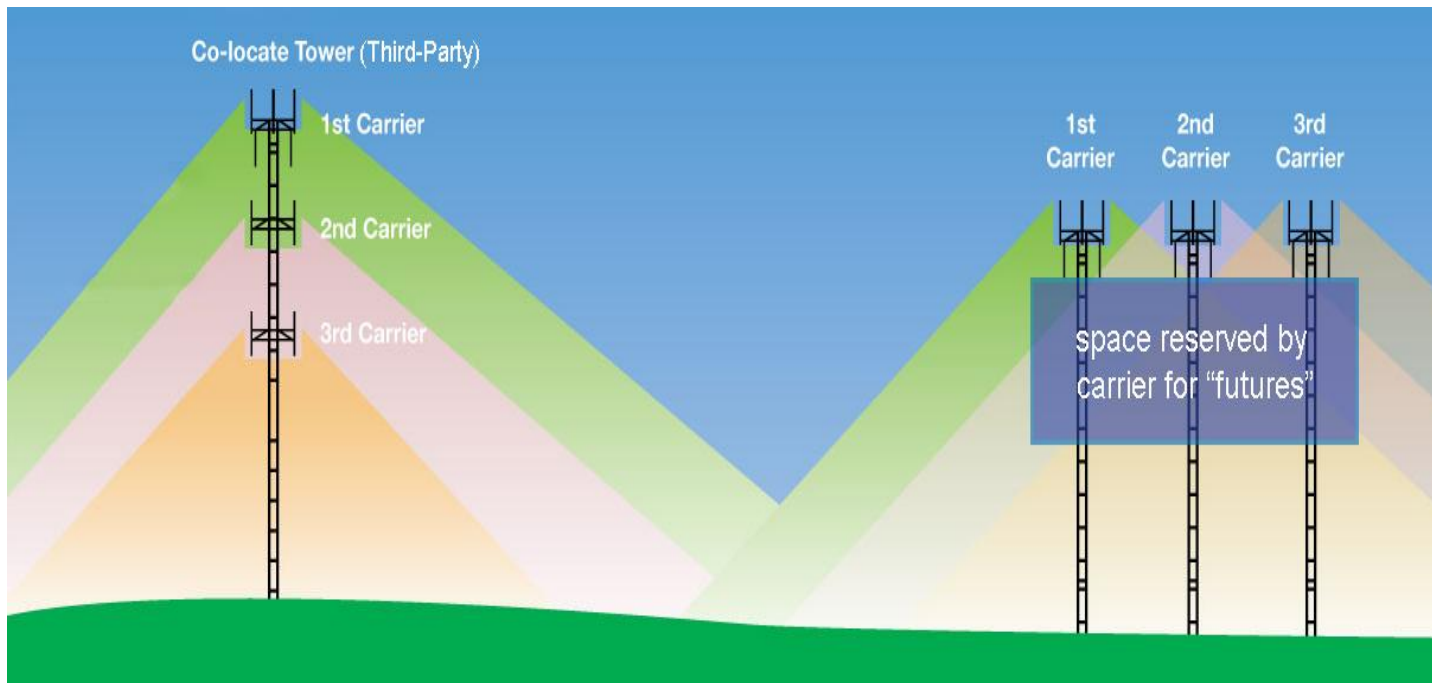
Telecommunication Tower Proposal
5724 Hwy-20, West Lincoln

Prepared by FONTUR International

April 13, 2026

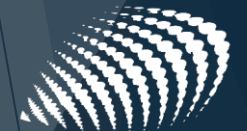
Signum Wireless Corporation

- ▶ Third party tower builder
- ▶ Room for up to three carriers on a single tower
- ▶ Works to reduce tower proliferation



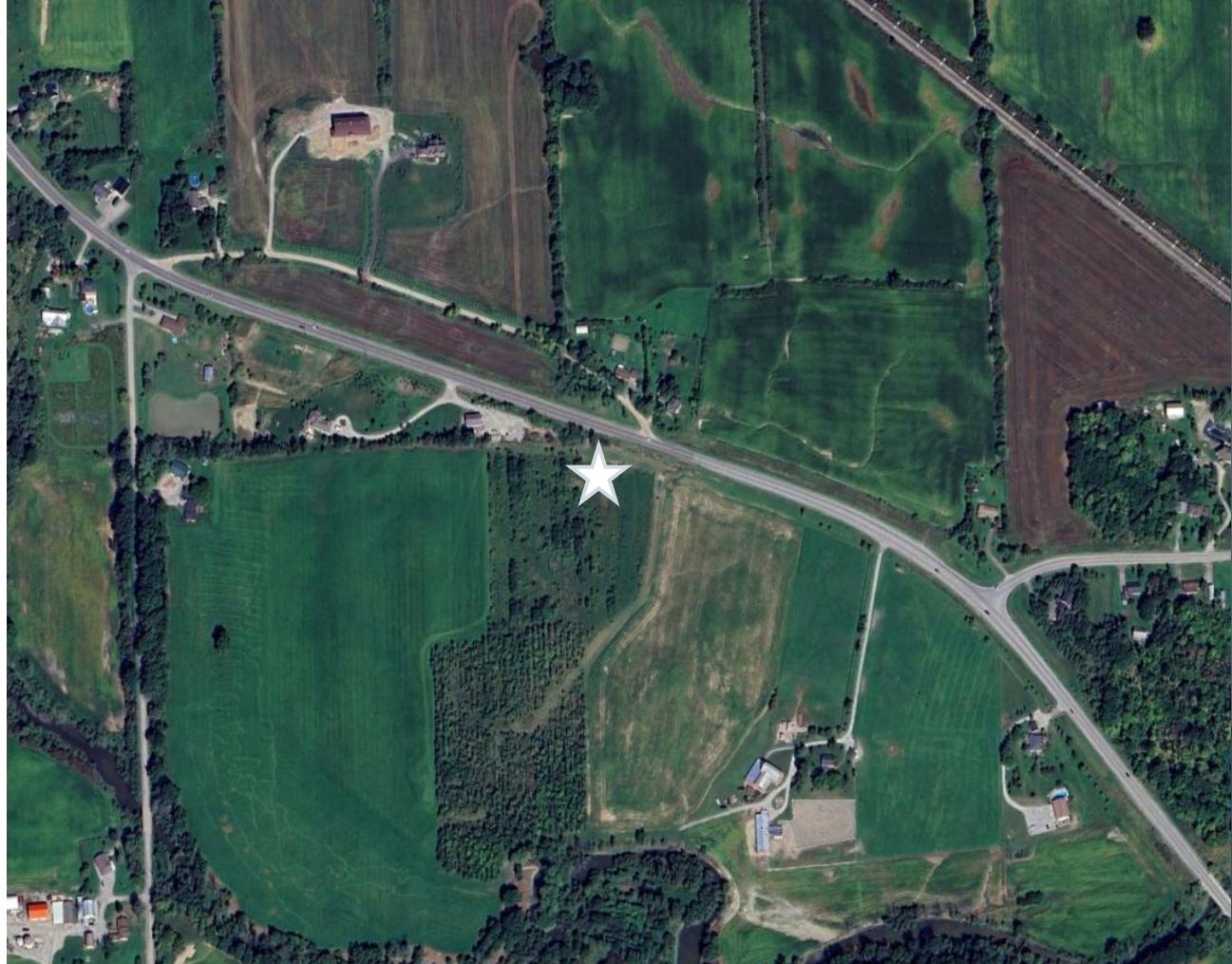
Why build a new tower?

- ▶ Wireless technology is responsible for delivering essential communications services such as:
 - ▶ EMS response
 - ▶ Police, fire, ambulance
 - ▶ Voice (Phone, video conferencing)
 - ▶ Data (E-mail, SMS)
 - ▶ Internet service (web-browsing)
 - ▶ Video streaming
- ▶ In order to provide wireless communications services, each carrier must have wireless networks



Proposed Tower Location

- ▶ Located at: 5724 ON-20, West Lincoln, ON L0R 1Y0
- ▶ Zoned as Agricultural
- ▶ Access: HWY-20
- ▶ Tower Height: 60 metre Self-Support Tower
- ▶ Compound: 144m²
 - ▶ With a 2.4m high chain link security fence topped with barbed wire



Proposed Site in Relation to Existing Towers



Photo Simulation

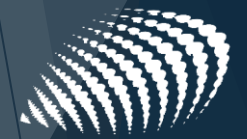
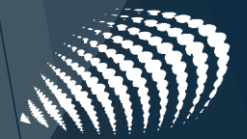


Photo Simulation



Public Consultation

- ▶ Start: March 13, 2026
- ▶ Public Meeting: April 13, 2026
- ▶ Concludes: April 20, 2026
- ▶ Mail-out notices were sent out to 22 property owners within the 180m radius
 - ▶ Additional notices were sent to the planner on file and Innovation, Science, and Economic Development Canada
 - ▶ English and French-Canadian notices were used in the notification package
- ▶ To date, we have not received any comments, questions, or concerns regarding this application

What about health & safety?

Health and safety are paramount to Signum Wireless. Health Canada has established electromagnetic exposure guidelines, known as Safety Code 6, to ensure the safe operation of wireless antenna installations. Signum Wireless ensures that all of its facilities operate well below the allowable limits measured, taking into account all pre-existing sources and combined effects of additional carrier co-locations; in fact, this site will be thousands of times below the allowable limits.

Health Canada's Safety Code 6 can be read here: http://www.hc-sc.gc.ca/eh-se/m/eh-se/m/eh-se/m/radiation/radio_guide/signes_direct/index-eng.php

Signum Wireless attests that the radio antenna system described in this notification package will be constructed in compliance with the National Building Code of Canada which includes all applicable CSA Radio Communications Regulations.

Regulatory and consultative procedures for telecommunications antennas can be found in Innovation, Science & Economic Development Canada's CPC 2-0-03 Issue 6 (updated in 2022).

Signum Wireless attests that the radio antenna system described in this notification package will comply with Transport Canada / NAV Canada aeronautical safety requirements. Both agencies have yet to complete their review of the proposal.

The proposed facility would include one 144 sq m fenced compound with chain-link and barbed wire-topped fencing installed around the base of the tower and equipment shelters, and would include one locked gate access point.

What about the environment?

Signum Wireless attests that the radio antenna system described in this notification package is exempt from the Impact Assessment Act.

Your local land use authority

The Township's Planning division reviews telecommunication towers proposed within the Township using the established Consultation Process for Wireless Telecommunication Facilities. The Township's role is to provide comment on telecommunications towers to proponents and Innovation, Science and Economic Development (ISED). The Federal Government has the exclusive jurisdiction to approve the licensing of towers. The requirement to consult can be found in ISED's document, Client Procedure Circular (CPC) 2-0-03. The purpose of consultation, as outlined in CPC 2-0-03, is to ensure that land use authorities are aware of significant antenna structures and/or installations proposed within their boundaries and that antenna systems are deployed in a manner which considers local surroundings.

Zoning by-laws and site plan approvals do not typically apply to these facilities, and a building permit is not required. Signum Wireless is committed to consultation with the local land use authority (the Township's planning division) and its residents in accordance with ISED's requirements.

This public notification has been designed to provide all the necessary information as required by ISED to those properties that fall within a circulation radius of 180m, measured from the centre of the tower.



How do I get involved?

Signum Wireless is committed to effective public consultation. You are invited to provide comments or inquiries to Signum Wireless about this proposal by mail, electronic mail, or fax.

A public meeting will be held on Monday April 13, 2026, located at Council Chambers Town Hall beginning at 6:30 pm.

In order to ensure your comments or questions are considered, you must respond by close of business (5:00p.m.) April 20, 2026 to:

FORTR International Inc.
70 East Beaver Creek Road, Suite 22
Richmond Hill, ON L4B 3B2
Fax: 866-234-7873
Email: ON1229.signum.info@fortrinternational.com

Your ISED/Federal Government contact

ATTENTION: Tower Issue - 5724 Hwy-20-ON1229
Southwestern Ontario District Office
4475 North Service Road, Suite 100
Burlington, ON L7L 4X7
Telephone: 1-855-465-6307
Fax: 905-639-6551
Email: spectrum@isido-spectre@ised-isde.gc.ca

Your land use authority contact

Susan Smyth
Manager, Community Planning & Design
Township of West Lincoln
318 Canborough St
P.O. Box 400
Smithville, ON L0R 2A0
Email: ssmyth@westlincoln.ca

For more information:

General information from Innovation, Science & Economic Development Canada (ISED):
<http://strategies.gc.ca/antenna>

Why is a new tower required?

The purpose of the tower is to provide cellular coverage to the surrounding residents, businesses and passerby traffic. A radio antenna and tower are the two most important parts of a radio communication system. The antenna is needed to send and receive signals for the radio station. The tower raises the antenna above obstructions such as trees and buildings so that it can send and receive these signals clearly.

Each radio station and its antenna system (including the tower) provide radio coverage to a specific geographic area, often called a cell. The antenna system must be carefully located to ensure that it provides a good signal over the whole cell area, without interfering with other stations. In areas where there are many cells, the antennas do not need to be very high. Where the cells are larger, the antennas must be higher above the ground level in order to provide good radio coverage for the whole area.

In this case, Signum Wireless' clients have determined the need for new antennas in the area in order to adequately provide contiguous coverage and service to customers in the Smithville community of West Lincoln. Signum Wireless chose this site to allow carriers to avoid problematic situations for customers such as poor voice and data quality, dropped calls, or even the inability to place a mobile call in the subject area.

Where will it be located?

The proposed site of the tower is at 5724 Hwy-20, approximately 49-metres south of Hwy-20 and 433-metres east of Patterson Rd.

Signum Wireless strongly supports co-location on existing towers and structures. The use of existing structures minimizes the number of new towers required in a given area and is generally a more cost effective way of doing business. Unfortunately in this case, there were no existing structures in the area that were viable alternatives. The next-nearest usable tower is approximately 3.9-km from the proposed location.

The proposed tower would be shared by multiple service providers, eliminating the need for future tower infrastructure in the immediate area.

Community Notification

For a 60m Telecommunication Tower

Located at:
5724 Hwy-20, West Lincoln

Coordinates:
N 43.082377
W 79.520032

Site Code ON1229

What will it look like?

Signum Wireless is proposing a 60-metre self-support tower to improve upon the overall poor coverage in your area and to provide space for the equipment of multiple service providers.

Below is a simulation showing the proposed tower.

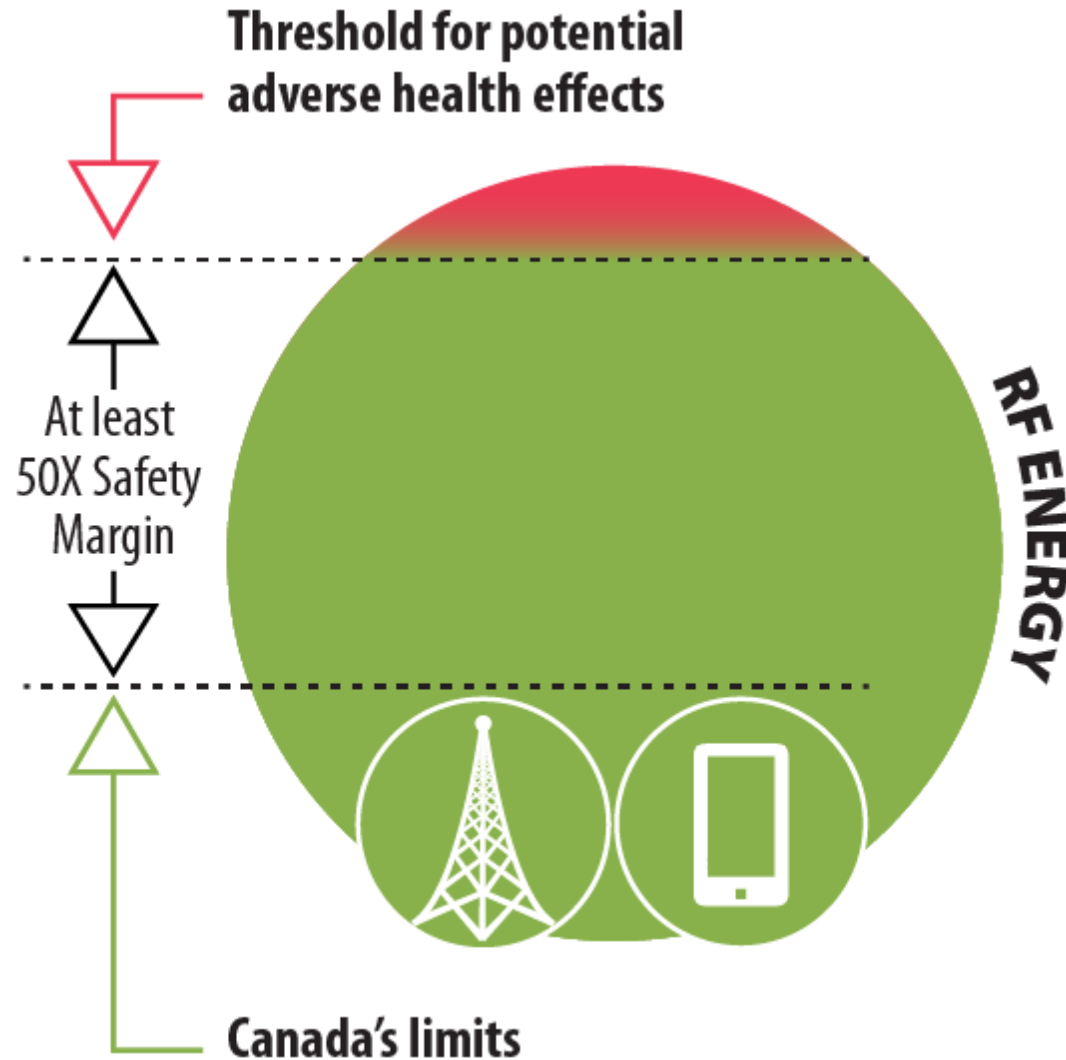
Tower Simulation



Current Image of Property



Safety Code 6



Health Canada

Email: hcinfo.infosc@canada.ca

Telephone: 613-957-2991

Toll free: 1-866-225-0709

Facsimile: 613-941-5366

Conclusion



Wireless service in the Township of West Lincoln needs upgrading to serve current and future needs



This one tower will be able to accommodate up to three carriers, preventing tower proliferation in and around the Township

Thank you

Contact Information:

SIGNUM Wireless Towers Inc.

Lucas Cuff

Fontur International Inc.

70 East Beaver Creek Rd, #22

Richmond Hill, ON L4B 3B2

Email: ON1229.signum.info@fonturinternational.com

Township of West Lincoln

Susan Smyth

Manager, Community Planning & Design

Township of West Lincoln

318 Canborough St, P.O. Box 400

Smithville, ON L0R 2A0

Email: ssmyth@westlincoln.ca

ISED Canada

ATTENTION: Tower Issue – 5724 HWY-20 – ON1229

Southwestern Ontario District Office

4475 North Service Road, Suite 100

Burlington, ON L7L 4X7

Telephone: 1-855-465-6307

Fax: 905-639-6551

Email: ic.spectrumswodo-spectrebdsoo.ic@canada.ca

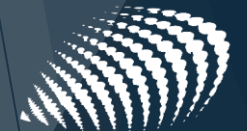
Health Canada

Email: hcinfo.infosc@canada.ca

Telephone: 613-957-2991

Toll free: 1-866-225-0709

Facsimile: 613-941-5366



SIGNUM WIRELESS