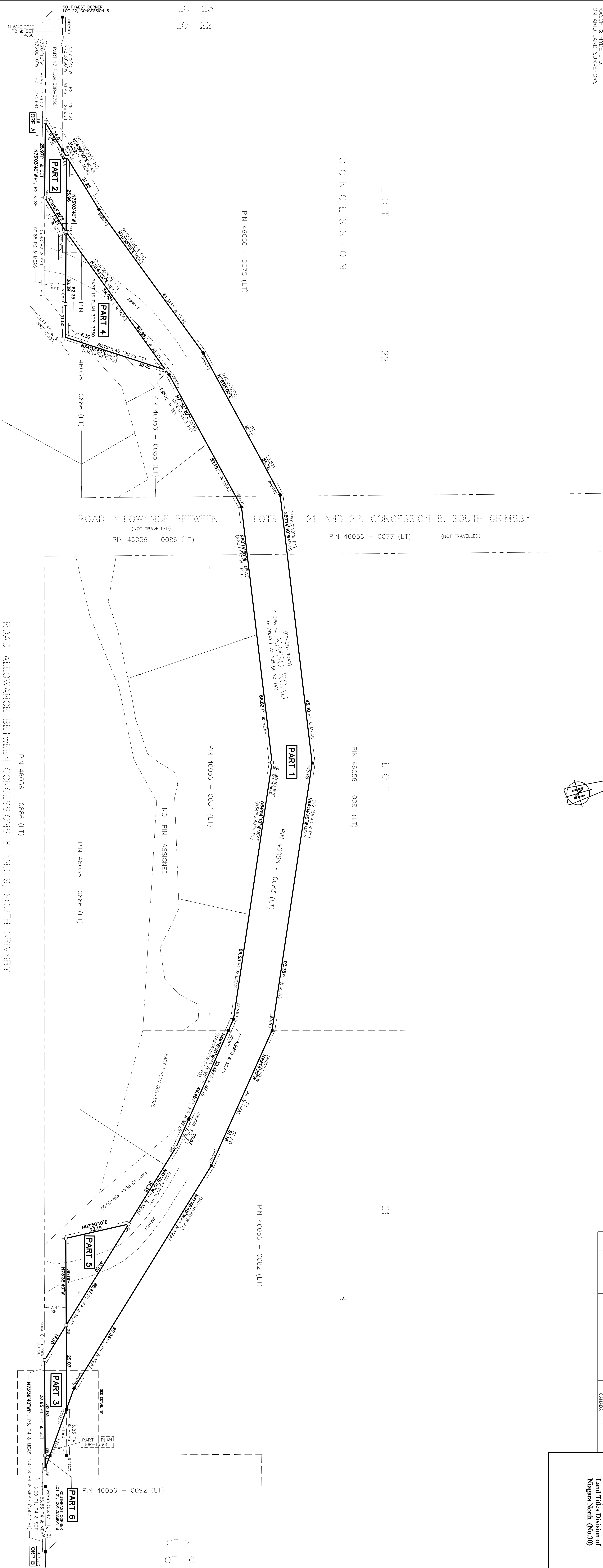


REGIONAL MUNICIPALITY OF NIAGARA

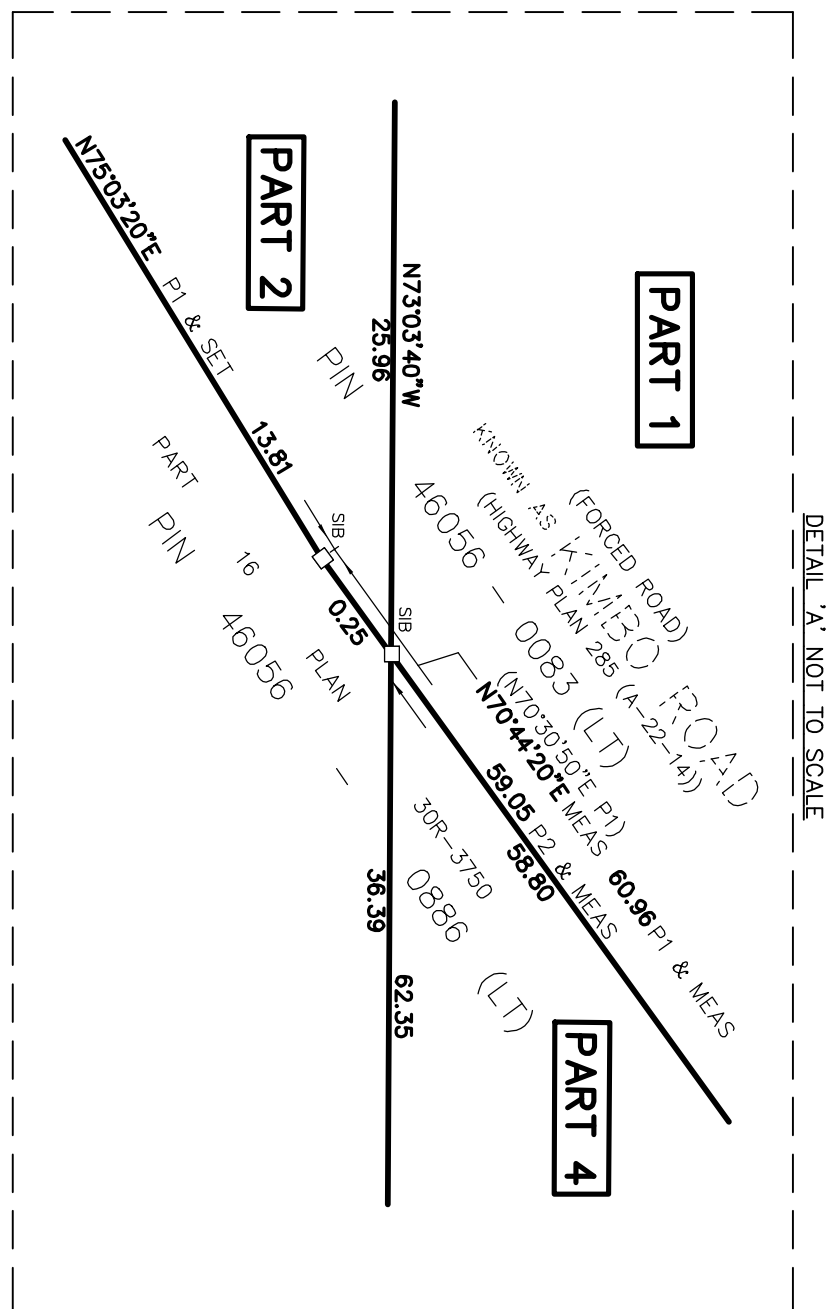
Schedule "B" - O-14-2025

PART	LOT	CONCESSION	PIN	NAME	AREA
1	PART OF LOT 21 REMOVED IN EXCHANGE LOT 5 IN LOT 22	8	46059-0083 (17)	THE RESERVATION OF NICKANAH	0.6266 Ha 15.64 a.m.
2	PART OF LOT 21		PART OF 46059-0088 (11)		262.5 a.m. 652.0 a.m.
3	PART OF LOT 21				
4	PART OF LOT 21				
5	PART OF LOT 21				
6	PART OF LOT 21		PART OF 46059-0092 (11)	RESERVATION OF NICKANAH	4.0 a.m.

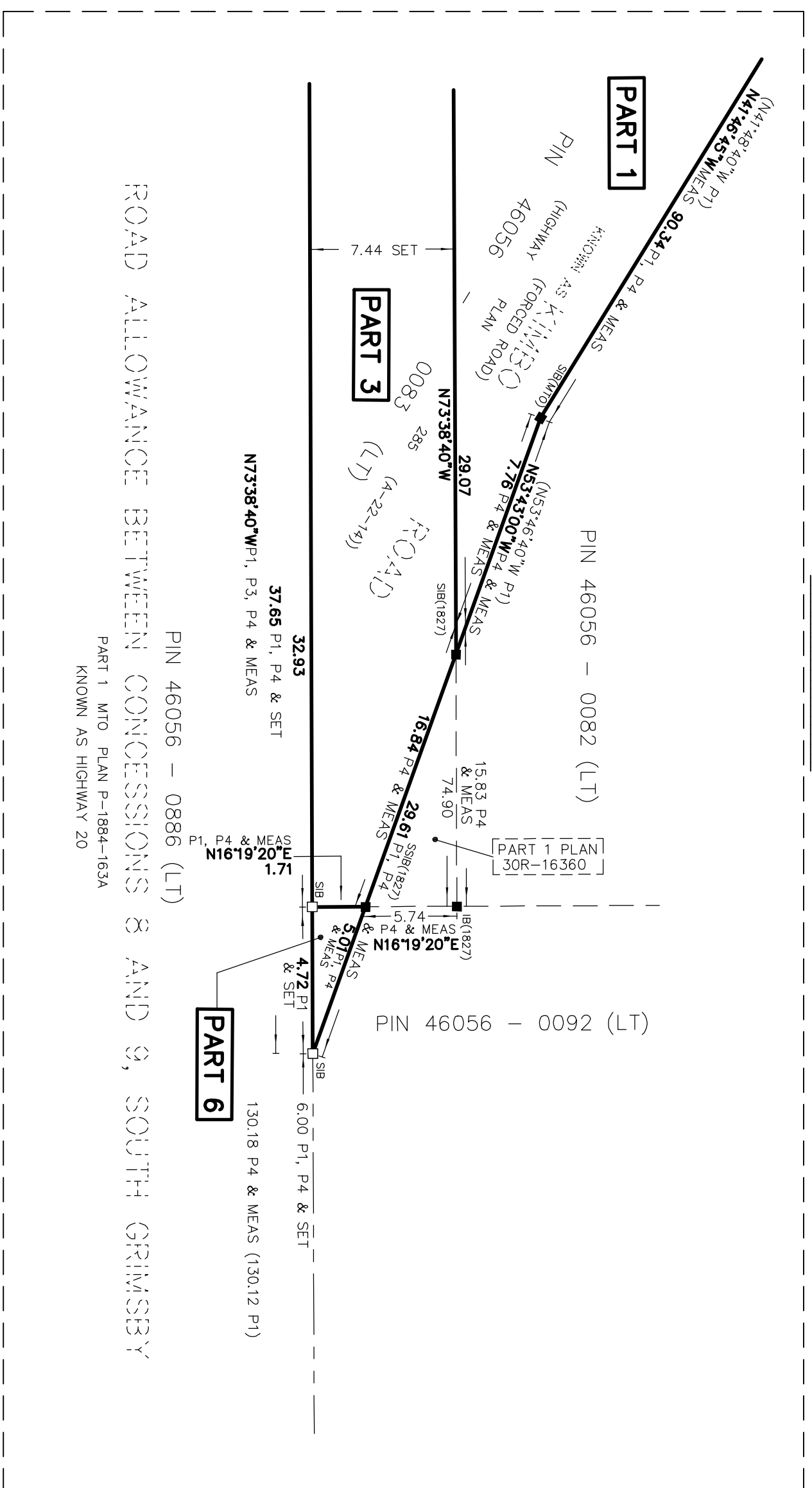
Received and deposited
April 10th, 2025
Jahanggeet Jafri
Representative for the
Land Registrar for the
Land Titles Division of
Niagara North (No.30)



ORDER-IN-COUNCIL OC-2384/98, AS AMENDED, REGISTERED AS INST NO. R0749788
KNOWN AS HIGHWAY 20



(FORMERLY THE KING'S HIGHWAY No. 20)
TRANSFERRED TO THE REGIONAL MUNICIPALITY OF NIAGARA BY
ORDER-IN-COUNCIL NO. 2184/68 AS AMENDED. REGISTERED AS INST NO. R0749781



LEGEND

[illegible]

DISTANCES ARE ADJUSTED GROUND DISTANCES AND CAN BE CONVERTED TO GRID DISTANCES BY MULTIPLYING BY THE AVERAGE COMBINED SCALE FACTOR (CSF = 0.9997275).

INTEGRATION DATA		
POINT ID	NORTHING	EASTING
ORP A 500	4775587.71	612805.52
ORP B 6(1627)	4775429.01	613340.03

COORDINATE VALUES ARE TO AN URBAN ACCURACY IN ACCORDANCE WITH SECTION 14 (2) OF O. REG 216/10.

CAUTION

COORDINATES CANNOT, IN THEMSELVES, BE USED TO RE-ESTABLISH CORNERS OR BOUNDARIES SHOWN ON THIS PLAN.

METRIC NOTE

DISTANCES AND COORDINATES SHOWN ON THIS PLAN ARE IN METRES AND CAN BE CONVERTED TO FEET BY DIVIDING BY 0.3048

BEARING NOTE

GENERATED FROM A LOCAL UTM ZONE 17 (EPOCH CANAD-
CHN96 (Epoch 2010.0)) DERIVED FROM OBSERVED REFERENCE POINTS
(ORPS) USING THE CAN-NET VRS NETWORK AND ARE REFERRED TO
THE CENTRAL MERIDIAN OF UTM ZONE 17 (81° WEST LONGITUDE)

ROTATION NOTE

FOR COMPARISON PURPOSES, THE AS RUNNING BEARINGS SHOWN ON P1, P2 AND P3 HAVE BEEN ROTATED 005°10" COUNTER-CLOCKWISE

NO ROTATION HAS BEEN APPLIED TO P4

SURVEYOR'S CERTIFICATE

1. THIS SURVEY AND PLAN ARE CORRECT AND IN ACCORDANCE WITH THE SURVEYS ACT, THE SURVEYORS ACT AND THE LAND TITLES ACT AND THE REGULATIONS MADE UNDER THEM.

2. THIS SURVEY WAS COMPLETED ON THE 6TH DAY OF MARCH 2025.

MARCH 31, 2025

Paul Frank

DATE _____ HAROLD D. HYDE
ONTARIO LAND SURVEYOR

THIS PLAN OF SURVEY RELATES TO A.O.L.S. PLAN SUBMISSION FORM V-89462

RASCH + HYDE L

Ontario Land Surveyors

DUNNVILLE, ONT. N1A 2X1
DUNNVILLE: 905-774-7188 FORT ERIE: 905-871-4444

DATE	1 - 600	CHURCH - 26 026	NAME
HAROLD D. HYDE O.L.S.			