

# SCHEDULE C - PD-05-2025



**LEGAL DESCRIPTION**  
 PART OF LOT 5, CONCESSION 9, GEOGRAPHIC TOWNSHIP OF SOUTH GRIMSBY (AS IN R0691284), SAVE AND EXCEPT PART 3, PLAN 30R-15491 TOWNSHIP OF WEST LINCOLN, REGIONAL MUNICIPALITY OF NIAGARA

**Disclaimer**  
 Locations of individual properties' accesses are conceptual for the purpose of illustrating the ability to provide on-street parking spaces within the proposed Draft Plan of Subdivision.

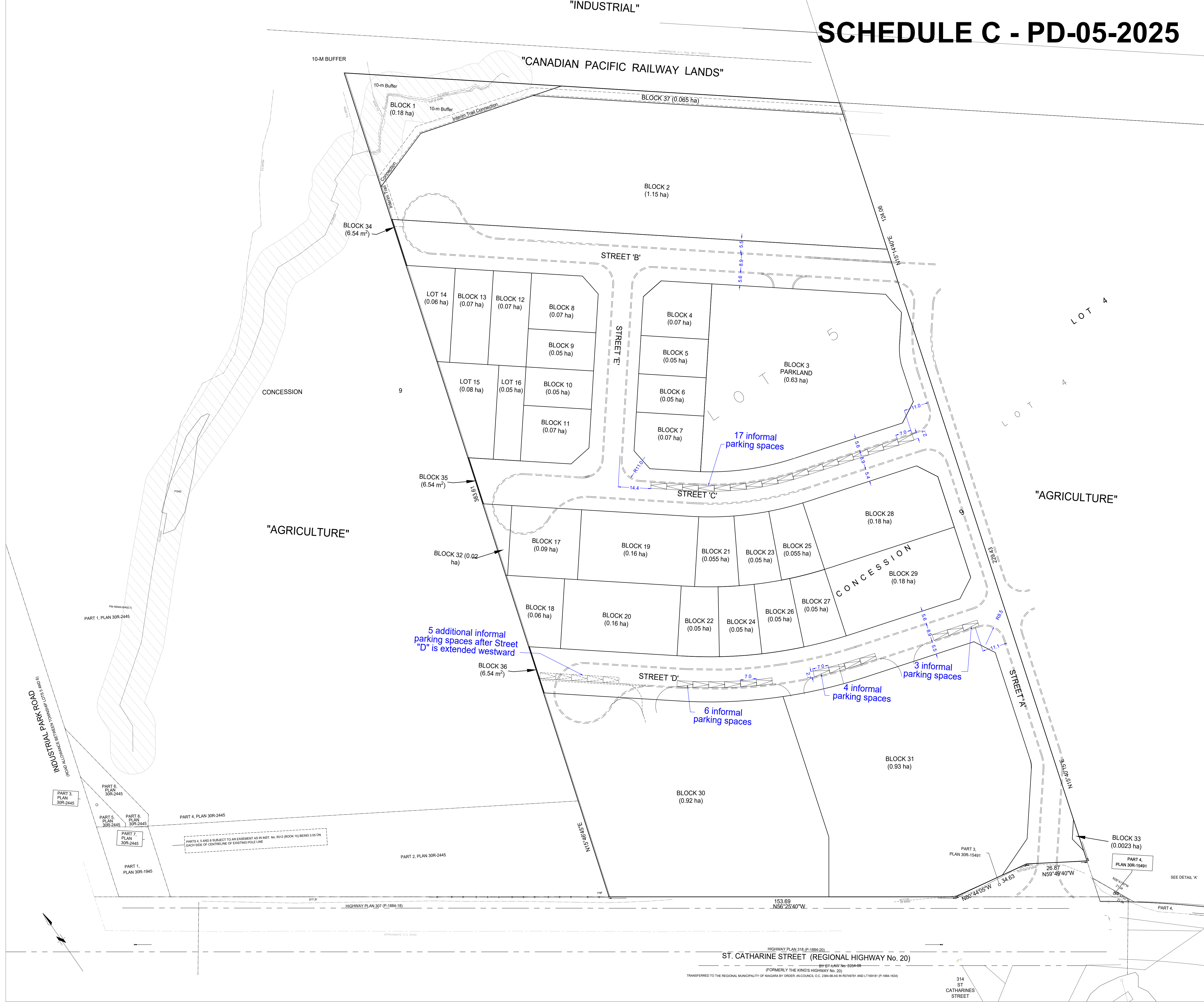
**REVISIONS**

NO.	DATE	REVISION	BY
1	2023-09-04	Parking Plan	JT
2	2023-09-07	1st Revision based on Staff's Inputs	JT
3	2023-12-04	2nd Revision (coordination with Draft Plan)	JT
4	2024-04-20	3rd Revision (coordination with Draft Plan)	JT
4	2024-11-20	4th Revision (coordination with Draft Plan)	JT

**PRELIMINARY CONCEPT PLAN**  
 LANDS NORTH OF ST. CATHARINES STREET,  
 TOWNSHIP OF WEST LINCOLN

For: KAINTHVILLE HOLDINGS INC. Scale: 1:750  
 Drawing No.: 21751.3.8 Date: November 20, 2024

THIS DRAWING SHALL ONLY BE USED IN CIRCUMSTANCES FOR WHICH IT WAS ORIGINALLY PREPARED AND FOR WHICH NPG PLANNING SOLUTIONS INC. WAS RETAINED.  
 NPG PLANNING SOLUTIONS INC. DOES NOT TAKE RESPONSIBILITY FOR THE ACCURACY OF THE LOCATIONAL INFORMATION OR OTHER MAPPED FEATURES FROM SECONDARY SOURCES SHOWN ON THIS DRAWING. THE INFORMATION ISSUED MAY BE CONFIDENTIAL AND MUST NOT BE USED OTHER THAN BY THE INTENDED RECIPIENT UNLESS AUTHORIZED BY NPG PLANNING SOLUTIONS INC. NPG PLANNING SOLUTIONS INC. ACCEPTS NO LIABILITY OR RESPONSIBILITY FOR ANY LOSS OR DAMAGE SUFFERED BY THE RECIPIENT ARISING OUT OF, OR IN CONNECTION WITH, THE USE OR MISUSE OF THE INFORMATION ISSUED.  
 ALL DRAWINGS ARE THE PROPERTY OF NPG PLANNING SOLUTIONS INC. AND MAY NOT BE ALTERED WITHOUT WRITTEN PERMISSION FROM NPG PLANNING SOLUTIONS INC.  
 DO NOT SCALE THE DRAWING.



ST. CATHARINE STREET (REGIONAL HIGHWAY No. 20)  
 (FORMERLY THE KING'S HIGHWAY No. 20)  
 TRANSFERRED TO THE REGIONAL MUNICIPALITY OF NIAGARA BY ORDER-IN-COUNCIL O.C. 2384-98 AS IN R0748781 AND L1161911 (P-1884-1834)

