

REQUIRE THIS PLAN TO BE DEPOSITED UNDER THE LAND TITLES ACT.
 RECEIVED AND DEPOSITED
 DATE: **NOVEMBER 22, 2023**
 PLAN **30R-16181**

SCHEDULE		PIN No.
PART 1	LOT	
PART 2	CONCESSION	
PART 3	PART OF 16	PART OF PIN 46069-0040 (LT)
PART 4		
PART 5		PART OF PIN 46069-0039 (LT)

PLANS 1 TO 4 INCLUSIVE COMPRISE PART OF PIN 46069-0040 (LT)
 PART 5 COMPRISES PART OF PIN 46069-0039 (LT)

**PLAN OF SURVEY OF
 PART OF LOT 16
 CONCESSION 2
 GEOGRAPHIC TOWNSHIP OF CAISTER
 TOWN OF LINCOLN
 REGIONAL MUNICIPALITY OF NIAGARA
 SCALE & NOTES**

Scale: 1:2000
 PREPARED BY: **BARICH GRENKIE SURVEYING LTD.**
 A DIVISION OF GEOMAPLE

METRIC
 DISTANCES AND CO-ORDINATES SHOWN ON THIS PLAN ARE IN METRES AND CAN BE CONVERTED TO FEET BY DIVIDING BY 0.3048

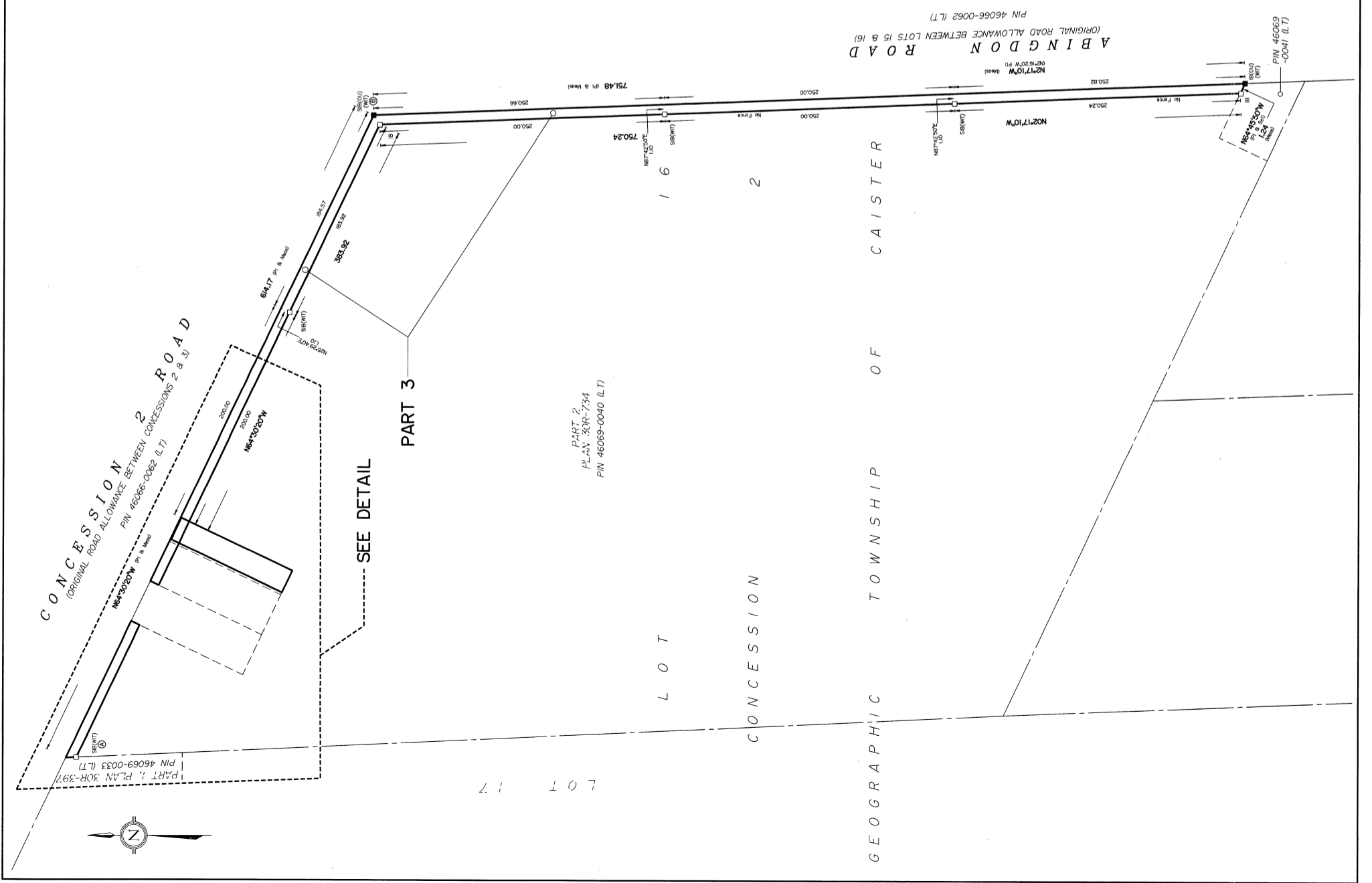
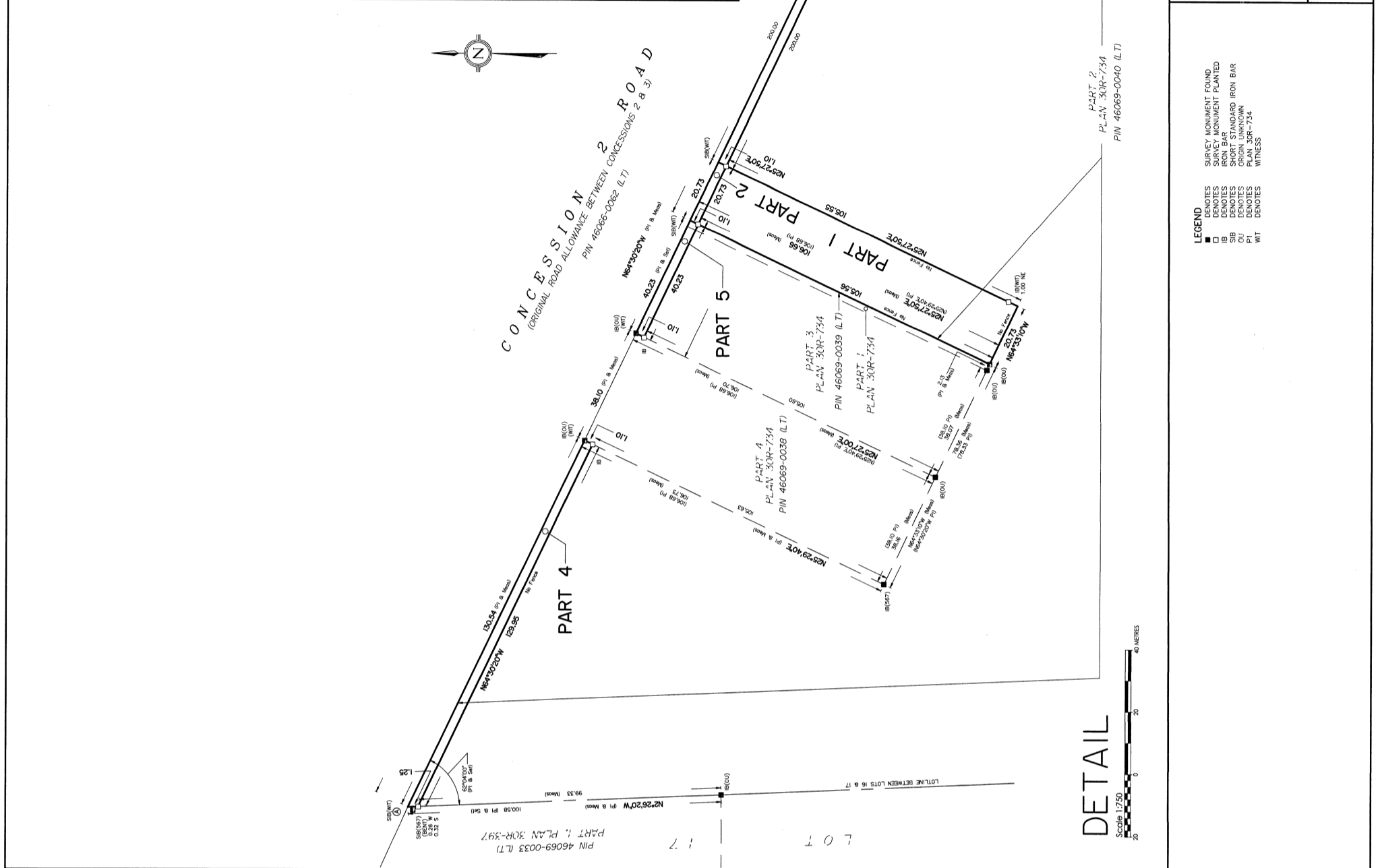
BEARING NOTE
 BEARINGS ARE LISTED AS GRID, DERIVED FROM GPS OBSERVED REFERENCE POINTS A AND B, BY REAL TIME NETWORK (RTN) OBSERVATIONS, UTM ZONE 17 (81° 00' WEST LONGITUDE) NAD83 (CSRS) (2010.0).
 FOR BEARING COMPARISONS, A ROTATION OF 0°59'20" COUNTER-CLOCKWISE WAS APPLIED TO BEARINGS ON PI

HORIZONTAL DATUM NOTE
 PROJECTION: UNIVERSAL TRANSVERSE MERCATOR
 DATUM: NAD83 (CSRS)(2010.0)

GRID SCALE CONVERSION
 DISTANCES ARE GROUND AND CAN BE CONVERTED TO GRID DISTANCES BY MULTIPLYING BY THE COMBINED SCALE FACTOR OF 0.999710.

OBSERVED REFERENCE POINTS (ORP) DERIVED FROM GPS OBSERVATIONS USING REAL TIME NETWORK (RTN) OBSERVATIONS UTM ZONE 17, NAD83 (CSRS)(2010.0)	COORDINATES TO UTM ACCURACY FEET SEC. 14(2) OF O.R.G. 216/10	
MONUMENT ID	NORTHING	EASTING
① SB	4788049.887	606526.519
② SB	4787786.873	607080.668

COORDINATES CANNOT IN THEMSELVES BE USED TO RE-ESTABLISH CORNERS OR BOUNDARIES SHOWN ON THIS PLAN.



LEGEND

- IB DENOTES SURVEY MONUMENT FOUND
- SB DENOTES SURVEY MONUMENT PLANTED
- IB DENOTES IRON BAR
- SB DENOTES SHORT STANDARD IRON BAR
- O/I DENOTES ORIGIN UNKNOWN
- IB DENOTES MONUMENT NOT FOUND
- WT DENOTES WITNESS

SURVEYOR'S CERTIFICATE

I, THIS SURVEY AND PLAN ARE CORRECT AND IN ACCORDANCE WITH THE REGULATIONS MADE UNDER THE ACT AND THE REGULATIONS MADE UNDER THE ACT.

2. THE SURVEY WAS COMPLETED ON NOVEMBER 14, 2023.

Nov 22, 2023
 ERIC G. SALZER
 O.L.S., O.L.P.

THIS PLAN OF SURVEY RELATES TO AOLS PLAN SUBMISSION No. V-67805

Barich Grenkie
 SURVEYOR
 301 HWY #8 & DUNDAS ST. W. STONEY CREEK, ON
 L4G 1E8
 (416) 664-8787

DWN BY: EWA
 CHK BY: ECS
 JOB No. 22-3052