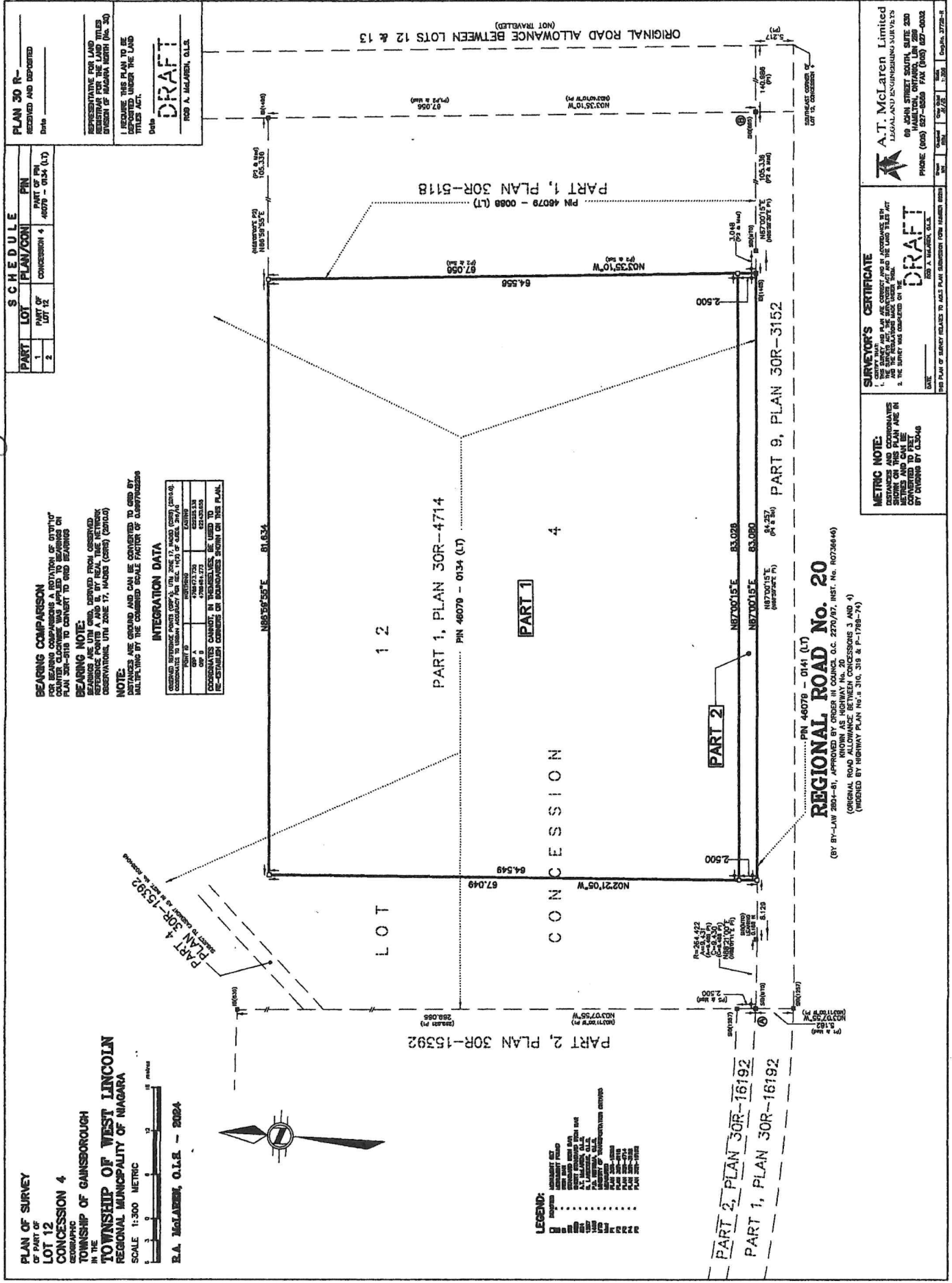


Schedule B - Survey Sketch

Road Widening Draft Plan



PLAN 30 R-
RECEIVED AND DEPOSITED
Date _____

REPRESENTATIVE FOR LAND REGISTRATION FOR THE LAND TITLES DIVISION OF ANISHA NORTH (No. 30)

I REQUIRE THIS PLAN TO BE DEPOSITED UNDER THE LAND TITLES ACT.

Date _____

DRAFT

ROD A. McLAUREN, O.L.S.

AT McLaren Limited
LEGAL AND ENGINEERING SERVICES
89 JAMES STREET SOUTH SUITE 200
TORONTO, ONTARIO M5R 1A8
PHONE (416) 597-8226 FAX (416) 597-0032
WWW.ATMCLAREN.COM

REGIONAL ROAD No. 20
(BY BY-LAW 2831-81, APPROVED BY COUNCIL, O.C. 2270/87, INST. No. N0726644)
(ORIGINAL ROAD 2831-81, APPROVED BY COUNCIL, O.C. 2270/87, INST. No. N0726644)
(MODIFIED BY HIGHWAY PLAN No. 3, 310, 319 & P-1788-74)

CONCESSION

PART 1, PLAN 30R-4714
PIN 46079 - 0134 (LT)

PART 2, PLAN 30R-15392
PIN 46079 - 0088 (LT)

PART 3, PLAN 30R-16192
PIN 46079 - 0141 (LT)

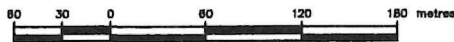
LOT 12

LOT 13

ORIGINAL ROAD ALLOWANCE BETWEEN LOTS 12 & 13 (NOT TRAVELED)

SKETCH FOR SEVERANCE APPLICATION
 OF
5447 REGIONAL ROAD 20
 IN THE
TOWNSHIP OF WEST LINCOLN
 REGIONAL MUNICIPALITY OF NIAGARA

SCALE 1:3000 METRIC



R.A. McLAREN, O.L.S. - 2024



METRIC NOTE:

DISTANCES AND COORDINATES SHOWN ON THIS PLAN ARE IN METRES AND CAN BE CONVERTED TO FEET BY DIVIDING BY 0.3048

NOTE:

DISTANCES SHOWN ON THIS PLAN WERE DERIVED FROM PLAN 30R-15392 & PLAN 30R-4714.

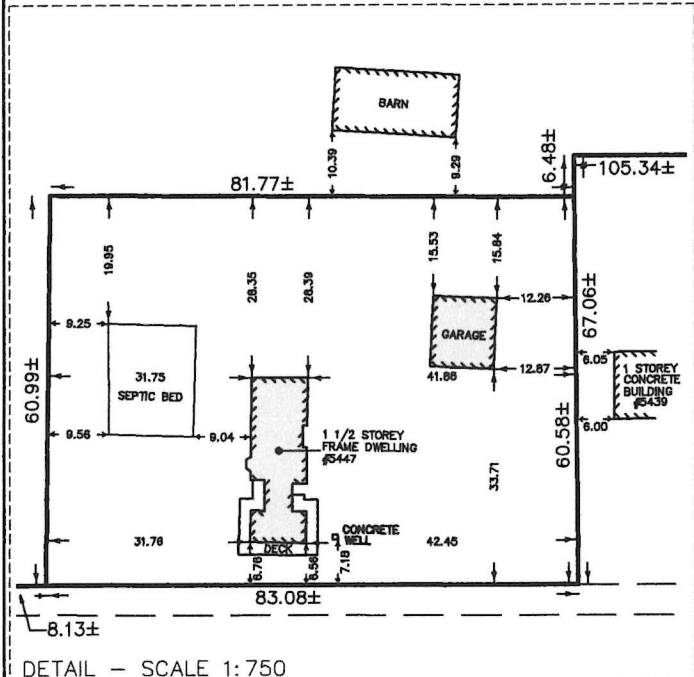
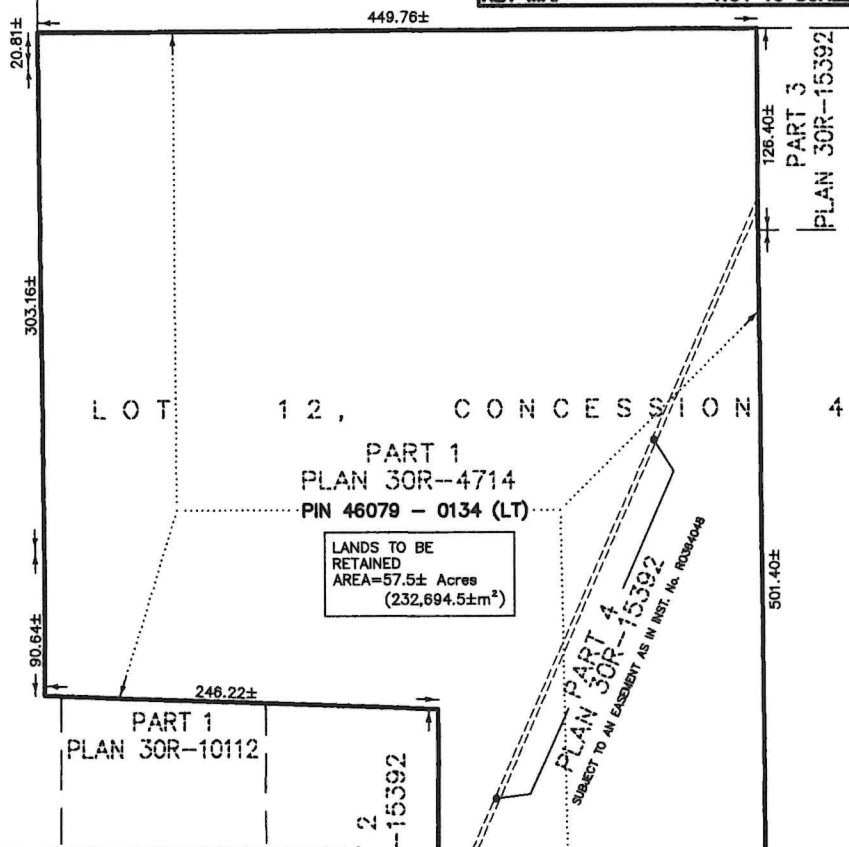
THIS PLAN IS COMPRISED OF PART OF LOT 12, CONCESSION 4, GEOGRAPHIC TOWNSHIP OF GAINSBOROUGH IN THE TOWNSHIP OF WEST LINCOLN, REGIONAL MUNICIPALITY OF NIAGARA.

CAUTION:

A) THIS IS NOT A PLAN OF SURVEY AND SHALL NOT BE USED EXCEPT FOR THE PURPOSE INDICATED IN THE TITLE BLOCK.

B) THIS PLAN IS PROTECTED BY COPYRIGHT ©

HIGHWAY No. 20
 (ORIGINAL ROAD ALLOWANCE BETWEEN CONCESSIONS 3 AND 4)



REGIONAL ROAD No. 20
 (BY BY-LAW 2804-81, APPROVED BY ORDER IN COUNCIL O.C. 2270/87, INST. No. R0736646)
 LOCALLY KNOWN AS HIGHWAY No. 20
 (ORIGINAL ROAD ALLOWANCE BETWEEN CONCESSIONS 3 AND 4)
 (WIDENED BY HIGHWAY PLAN No.'s 310, 319 & P-1789-74)

A.T. McLaren Limited
 LEGAL AND ENGINEERING SURVEYS
 89 JOHN STREET SOUTH, SUITE 230
 HAMILTON, ONTARIO, L8N 2B8
 PHONE (905) 827-8559 FAX (905) 827-0032

Drawn MN	Checked RBM	Drawn Chief JK/JS	Scale 1:3000	Dwg.No. 37728-SK
-------------	----------------	----------------------	-----------------	---------------------