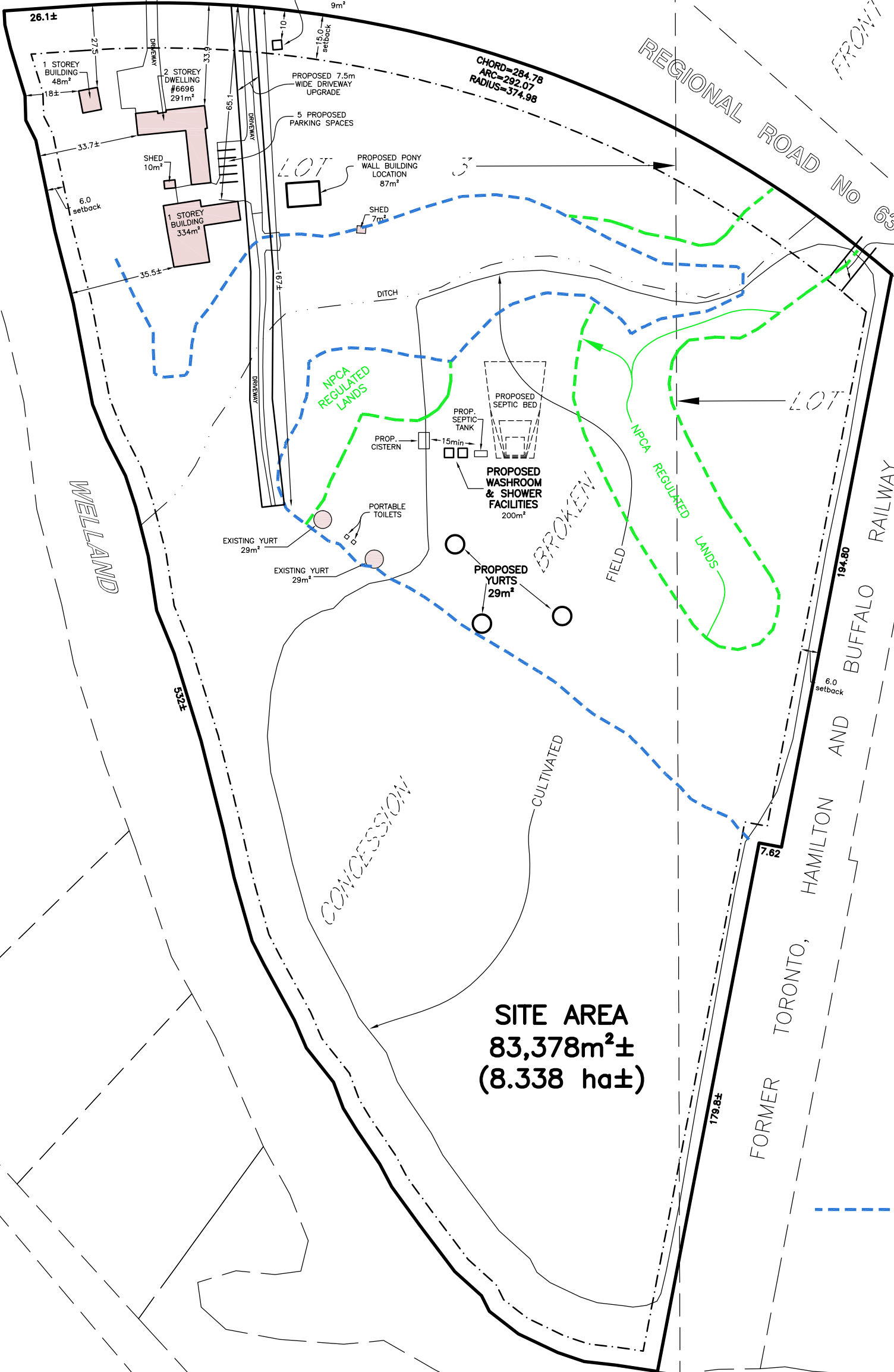


CANBOROUGH ROAD

REGIONAL ROAD No 63



SITE AREA
83,378m²±
(8.338 ha±)

--- DENOTES FLOODPLAIN LIMIT

SKETCH

SHOWING PROPOSED FEATURES

PART OF LOTS 3 AND 4
 CONCESSION BROKEN FRONT
 GEOGRAPHIC TOWNSHIP OF GAINSBOROUGH
 IN THE

TOWNSHIP OF WEST LINCOLN

REGIONAL MUNICIPALITY OF NIAGARA

SCALE 1 : 1500 (METRIC)

NOTE: THIS SKETCH IS PREPARED FROM COMPILED AND CALCULATED INFORMATION, NOT FROM AN ACTUAL SURVEY.

DO NOT SCALE FROM THIS DRAWING.

ALL MEASUREMENTS ARE +/- MEASUREMENTS.

CAUTION: THIS IS NOT A PLAN OF SURVEY AND SHALL NOT BE USED EXCEPT FOR THE PURPOSE INDICATED IN THE TITLE BLOCK.

"THIS IS NOT AN ORIGINAL COPY UNLESS EMBOSSED WITH SEAL."

© COPYRIGHT 2022
 THE REPRODUCTION, ALTERATION OR USE OF THIS SKETCH, IN WHOLE OR IN PART WITHOUT THE EXPRESS WRITTEN PERMISSION OF CHAMBERS AND ASSOCIATES SURVEYING LTD. IS STRICTLY PROHIBITED.

JUNE 29, 2022
 DATE

Donald G. Chambers
 DONALD G. CHAMBERS, B. Sc., O.L.S.

CHAMBERS AND ASSOCIATES SURVEYING LTD

12 THOROLD ROAD EAST
 WELLAND ONTARIO
 L3C 3T2

(905) 735-7841 / 735-7844
 FAX (905) 735-7333
 www.casl-surveying.com

DWG 21003_SP

FILE 21-03

BENCHMARK:
 ELEVATIONS HEREON ARE GEODETIC AND WERE DERIVED FROM THE TOPNET RTK NETWORK, NAD83 CSRS, VERSION 3, EPOC 2010.

