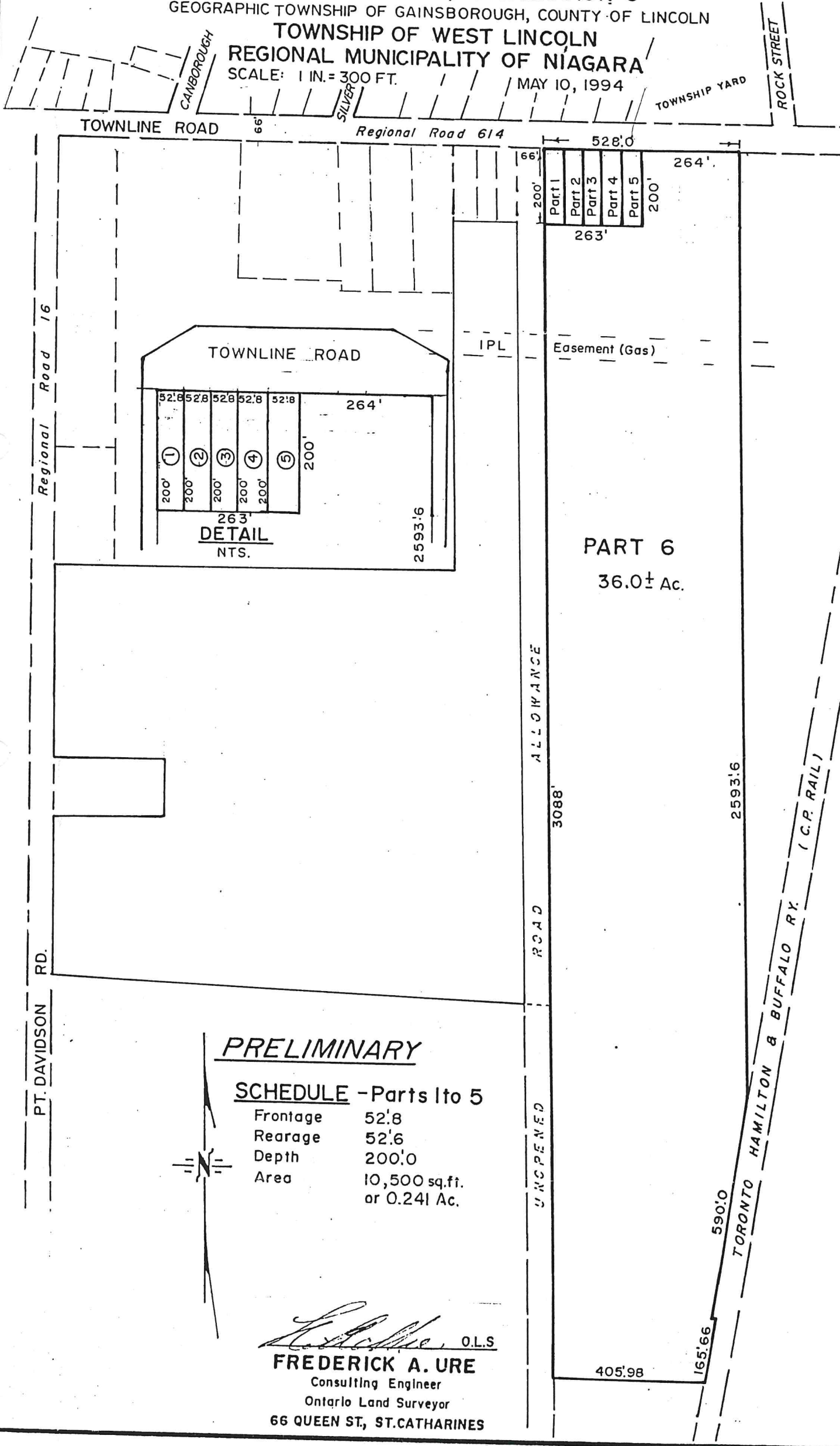


SKETCH FOR LAND DIVISION APPLICATION ON
PART OF LOT 31, CONCESSION 6
GEOGRAPHIC TOWNSHIP OF GAINSBOROUGH, COUNTY OF LINCOLN
TOWNSHIP OF WEST LINCOLN
REGIONAL MUNICIPALITY OF NIAGARA
SCALE: 1 IN. = 300 FT. MAY 10, 1994



PRELIMINARY

SCHEDULE - Parts 1 to 5

Frontage	52'8
Rearage	52'6
Depth	200'0
Area	10,500 sq.ft. or 0.241 Ac.


O.L.S.
FREDERICK A. URE
Consulting Engineer
Ontario Land Surveyor
66 QUEEN ST., ST.CATHARINES