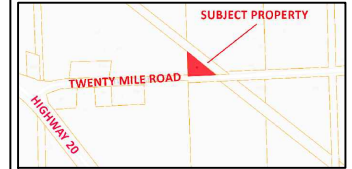
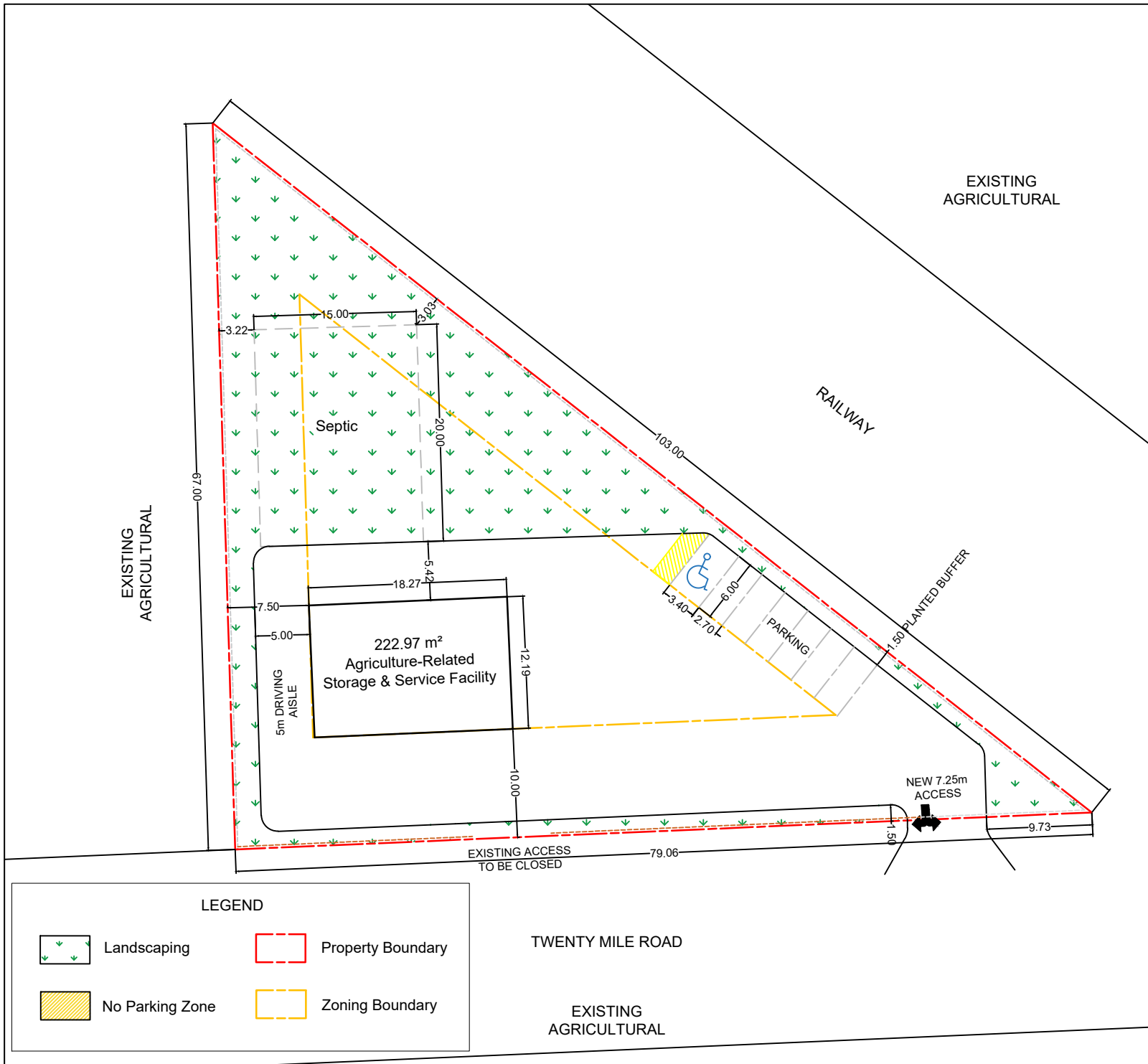


Attachment 1 to Draft Site Plan



KEY MAP (N.T.S.)

AGRICULTURAL SERVICE & SUPPLY ESTABLISHMENT SITE PLAN

5623 TWENTY MILE ROAD
WEST LINCOLN
NIAGARA REGION

CON 6 PT LOT 24



LandPro Planning Solutions
110 James St. #204, St. Catharines
(289) 687-3730

ZONING REQUIREMENTS

Lot Area	0.40 ha.
Parking (Standard)	6
Parking (Accessible)	1
Frontage	50m
Front Yard	10m
Interior Side Yard	7.5m
Exterior Side Yard	10m
Read Yard	7.5m
Lot Coverage	40%
Landscaping	29.1%

REQUIRED AMENDMENTS

NONE



SCALE: 1:500
DATE: OCT 4, 2022