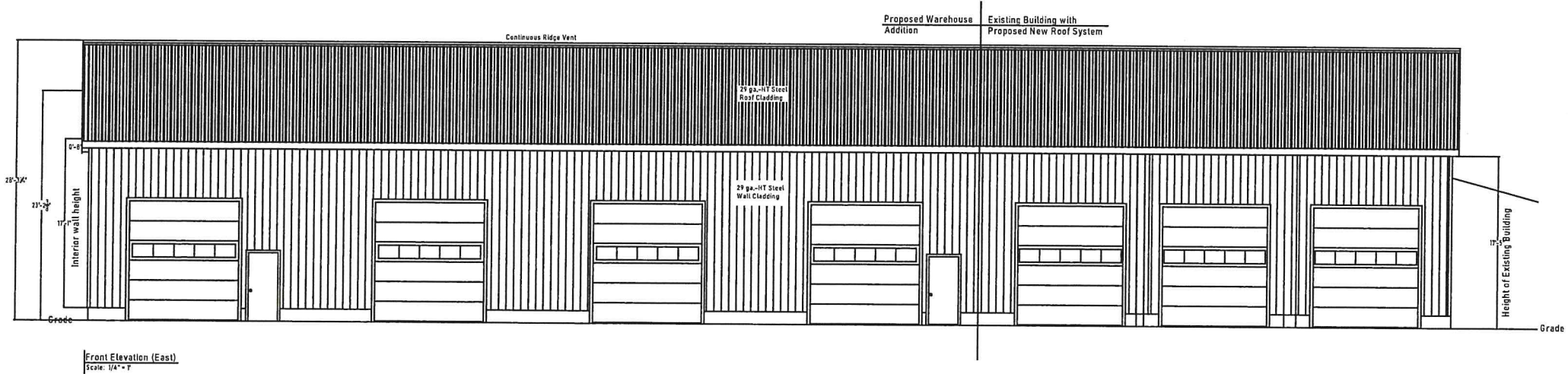
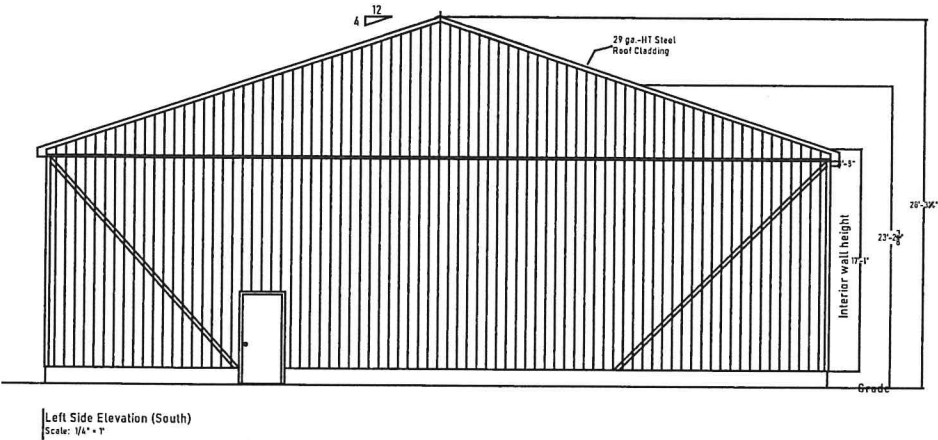
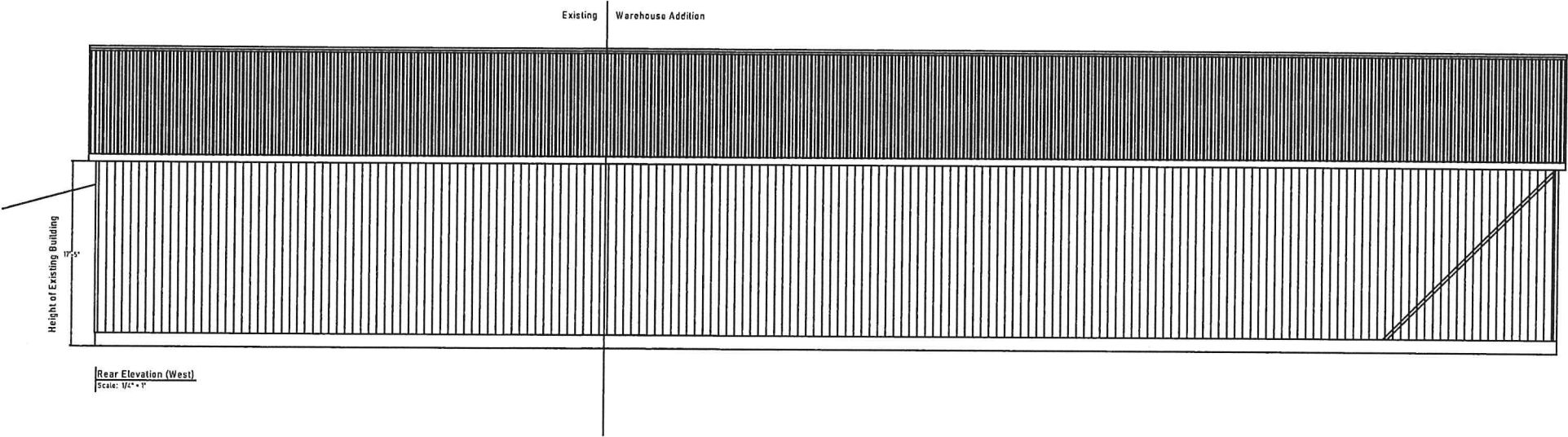


SKETCH
SHOWING EXISTING AND PROPOSED FEATURES
PART OF LOT 53
REGISTERED PLAN M-88
TOWNSHIP OF WEST LINCOLN
REGIONAL MUNICIPALITY OF NIAGARA
SCALE 1 : 300
DONALD G. CHAMBERS
ONTARIO LAND SURVEYOR

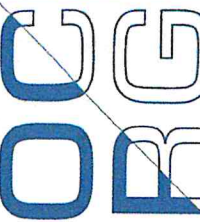
CAUTION
THIS IS NOT A PLAN OF SURVEY AND SHALL NOT BE USED EXCEPT FOR THE PURPOSE INDICATED IN THE TITLE BLOCK.
© COPYRIGHT 2021
THE REPRODUCTION, ALTERATION OR USE OF THIS SKETCH IN WHOLE OR IN PART, WITHOUT THE EXPRESS WRITTEN PERMISSION OF CHAMBERS AND ASSOCIATES SURVEYING LTD., IS STRICTLY PROHIBITED.
NOTE
THIS SKETCH IS PREPARED FROM COMPILED AND CALCULATED INFORMATION, NOT FROM AN ACTUAL SURVEY.
DO NOT SCALE FROM THIS DRAWING.
"THIS IS NOT AN ORIGINAL COPY UNLESS EMBOSSED WITH SEAL."

METRIC NOTE
DISTANCES SHOWN ON THIS PLAN ARE IN METRES AND CAN BE CONVERTED TO FEET BY DIVIDING BY 0.3048.
LEGEND
DENOTES EXISTING GROUND ELEVATION
CB CATCH BASIN
MH MANHOLE
BOL BOLLARD
LS LIGHT STANDARD
HP HYDRO POLE
OU OVERHEAD UTILITY LINE
CL CHAIN LINK FENCE
AS ASPHALT SURFACE
CO CONCRETE SURFACE
GR GRAVEL SURFACE

FIELD WORK COMPLETION DATE: JULY 12, 2021		
REVISIONS		
Rev #	REVISION	Date
0	Submitted to client for review	19 July/21
1	Final submission	20 July/21
CHAMBERS AND ASSOCIATES SURVEYING LTD		
12 THOROLD ROAD EAST (905) 735-7841 / 735-7844 WELLAND, ONTARIO L3C 3T2 FAX (905) 735-7333 www.cas-surveying.com		
DRAWN BY: D. H. T.	MSCAD: 02061-2_US	DWG: 02061-2_TOPO FILE NO: 02-61-2



ONTARIO
CONSTRUCTION
RESOURCE
GROUP



7731 Concession 3 Road
Smithville, ON
L0R 2A0
905.246.2565

This drawing and all information
that is contained within it is the
exclusive property of Ontario
Construction Resource Group.
It is not to be copied or used in
any other way without the
express written consent of
Ontario Construction Resource
Group.

DATE	10.08.2021
SCALE	As Noted
DRAWN	Andrew
FILE	OCRG 21.009

PROJECT
60'x90' Warehouse
Addition

ADDRESS
214 St. Catharine St.
Smithville

DRAWING TITLE
ELEVATIONS

Sheet 2 of 7