

TRANSPORTATION SERVICES

CAPITAL PROJECTS - 5 YR OVERVIEW



Agenda

- 1-5 Year Capital Forecast
 - 10 Year Capital Outlook
 - Safety Initiatives
 - Regional Vision
- 
- A decorative graphic at the bottom of the slide consisting of a series of parallel diagonal stripes in a light blue color, extending across the entire width of the slide.

Capital Budget Allocation

Niagara Region's Capital Budget is broken down into four (4) main areas:

- Network Expansion
- Intersection Improvement Program
- Roads Rehabilitation Program
- Structure Rehabilitation Program

Program Definitions

➤ **Network Expansion**
includes the construction of new roads, and the widening of existing roads to accommodate growth and development as part of the Region's 10-Year Capital Roads Program identified in the Transportation Master Plan.

➤ **Intersection Improvement Program**
involves modifications to improve the safety of the intersection, such as adding turn lanes and curbs, resurfacing the road and changing pavement markings, installing new traffic signals, and creating roundabouts.

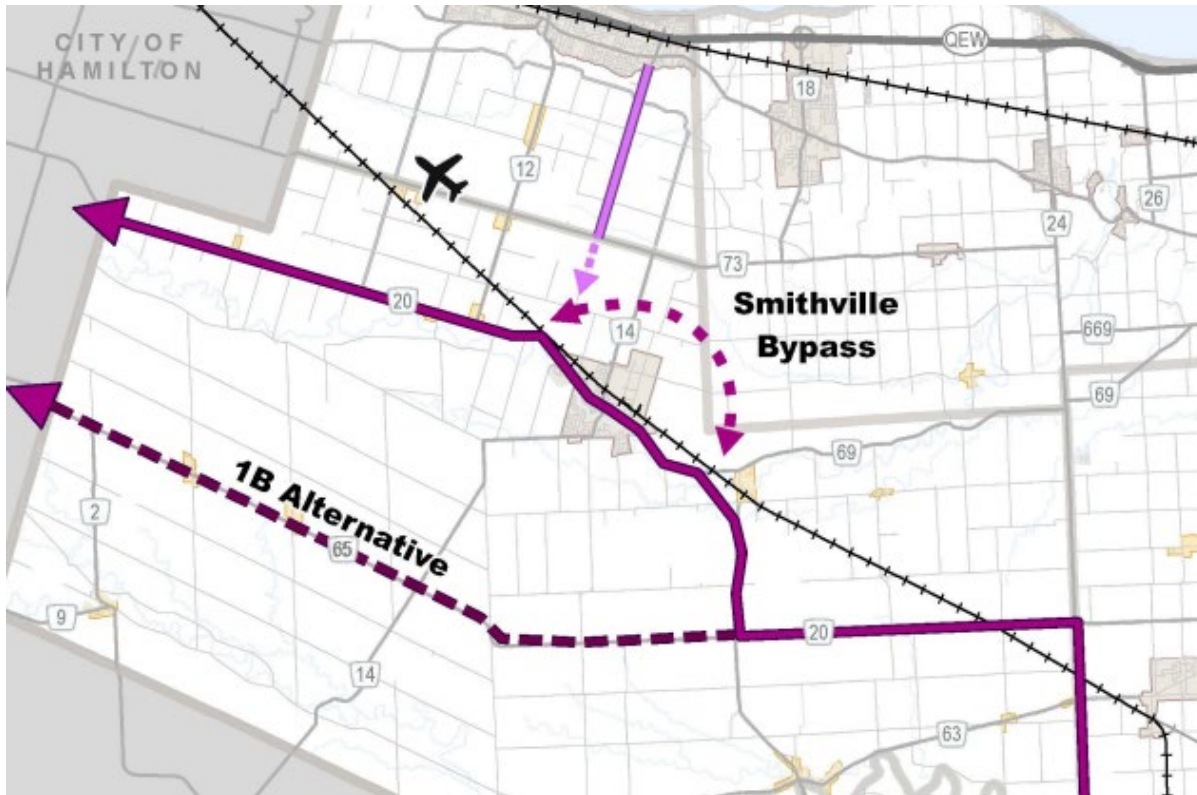
➤ **Roads Rehabilitation Program**
involves reconstruction of roads to address deteriorating pavement conditions and improve the cross section. This may include new buried infrastructure, curb and gutter and active transportation.

➤ **Structure Rehabilitation Program**
Will include one of the following strategies:
Bridge Rehabilitation involves the modification, alteration or improvement of existing bridges on Regional Roads. The work is performed to correct deficiencies that will extend the service life or increase the load carrying capacity.
Bridge Replacement involves the replacement of existing bridge structures that have reached the end of their service life.

I-5 Year Capital Forecast Network Expansion

Hwy 20 Smithville Bypass Study

Status
Future Project



Hwy 20 Smithville Bypass area from 2017 TMP

I-5 Year Capital Forecast Intersection Improvement Program

Regional Road 14 Thirty Rd At Young St

Status
Future Project



RR14 Thirty Rd looking north at Young St

I-5 Year Capital Forecast Intersection Improvement Program

Regional Road 24 Victoria Ave

At RR63 Canboro Rd

Status

Design Phase



Victoria Avenue - looking north



Canboro Road - looking west

I-5 Year Capital Forecast Roads Rehabilitation Program

Regional Road 2 Caistorville Rd From Regional Boundary to Concession 1 Rd

Status

Design to commence in 2022



RR2 Caistorville Rd looking north to Concession 1 Rd

I-5 Year Capital Forecast Roads Rehabilitation Program

Regional Road 20 West St Phase 4 South Grimsby Rd 5 to Wade Rd

Status
Detailed Design underway



RR20 West St looking west to South Grimsby Rd 5

I-5 Year Capital Forecast Roads Rehabilitation Program

Regional Road 20 St. Catharines St Phase 5 Griffin St to Industrial Park Rd

Status
Detailed Design underway



RR20 St. Catharines St looking east to Industrial Park Rd

I-5 Year Capital Forecast Roads Rehabilitation Program

Regional Road 63 Canborough Rd from RR27 Wellandport Rd to the Wellandport Community Centre

Status

Preliminary Design underway



Canborough Rd west of Lincoln St - looking west



Canborough Rd east of Welland St - looking east

I-5 Year Capital Forecast Roads Rehabilitation Program

Regional Road 69 Twenty Mile Rd from RR24 Victoria Ave to Mountain Rd

Status
Future Project



RR69 Twenty Mile Rd looking west at Snyder Rd

I-5 Year Capital Forecast Structure Rehabilitation Program

York Rd Culvert

Roadway over the culvert looking east

Status

Future Project



York Rd Culvert
– north elevation



I-5 Year Capital Forecast Structure Rehabilitation Program

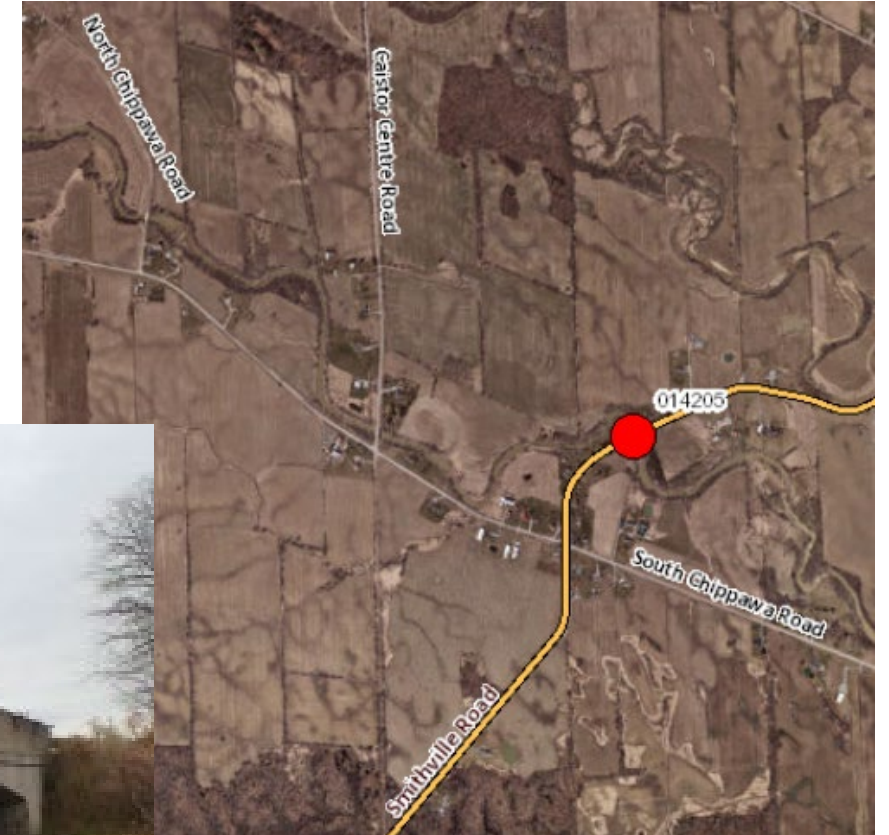
Warner Bridge

Smithville Rd over structure looking south

Status
Future Project



Warner Bridge –
east elevation

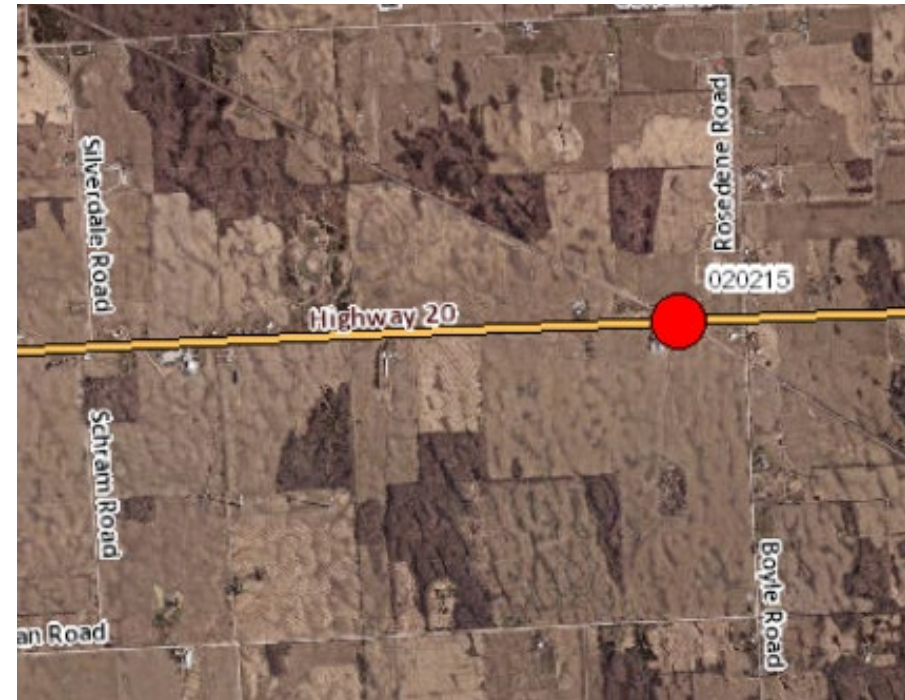


I-5 Year Capital Forecast Structure Rehabilitation Program

Hwy 20 CPR Subway Bridge

Roadway under structure looking east

Status
Future Project



I-5 Year Capital Forecast Structure Rehabilitation Program

Beaver Creek Bridge

Roadway under structure looking west

Status
Future Project



Beaver Creek Bridge – north elevation



6-10 Year Capital Forecast Structure Rehabilitation Program

Ellis Bridge and Caistorville Rd Bridge

Ellis Bridge - Caistorville Rd looking south

Status
Future Project



Caistorville Rd Bridge - looking south

Status
Future Project



Ellis Bridge -
east elevation



Caistorville Rd Bridge –
west elevation

6-10 Year Capital Forecast Structure Rehabilitation Program

Thirty Rd Bridge

Roadway over bridge looking south

Status
Future Project



Thirty Rd Bridge –
west elevation



6-10 Year Capital Forecast Structure Rehabilitation Program

Canborough Rd Bridge

Roadway over Culvert – looking east

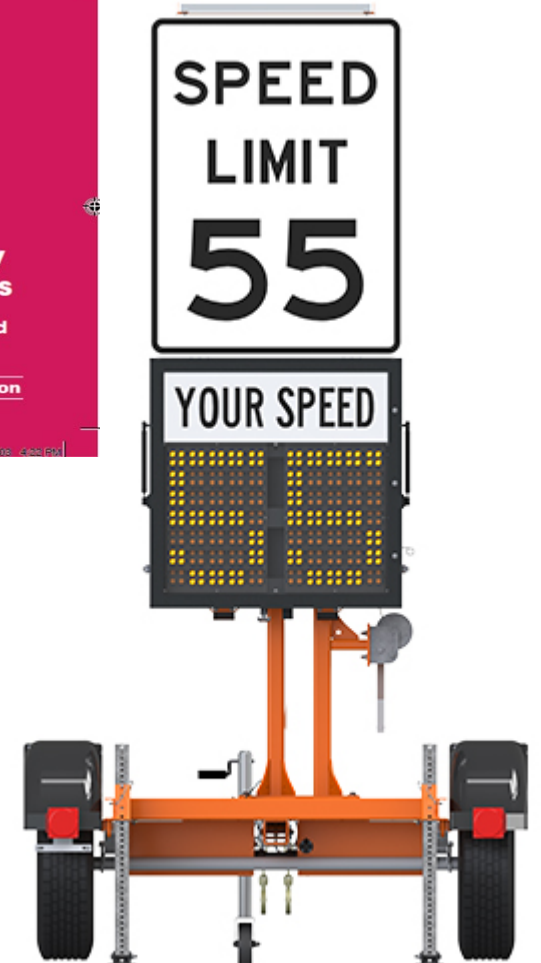
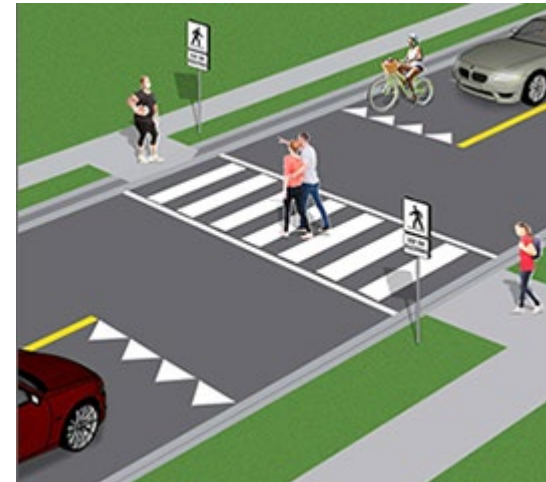
Status
Future Project



Canborough Rd Bridge –
South elevation

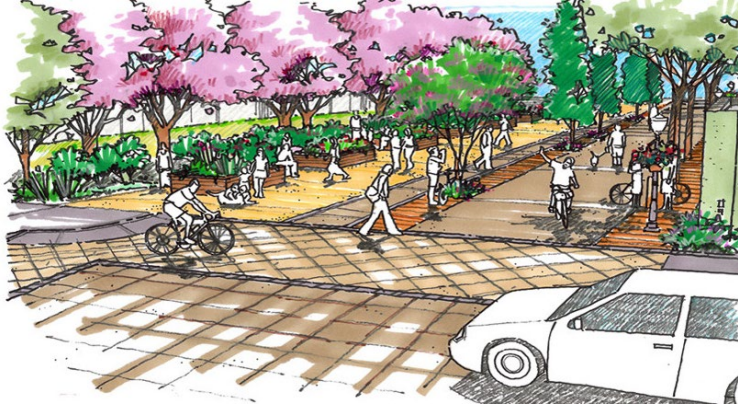
Safety Initiatives

- Vision Zero Road Safety Program
- Pavement Line Marking and Crosswalks
- Speed Display Trailer
- Sign Installations



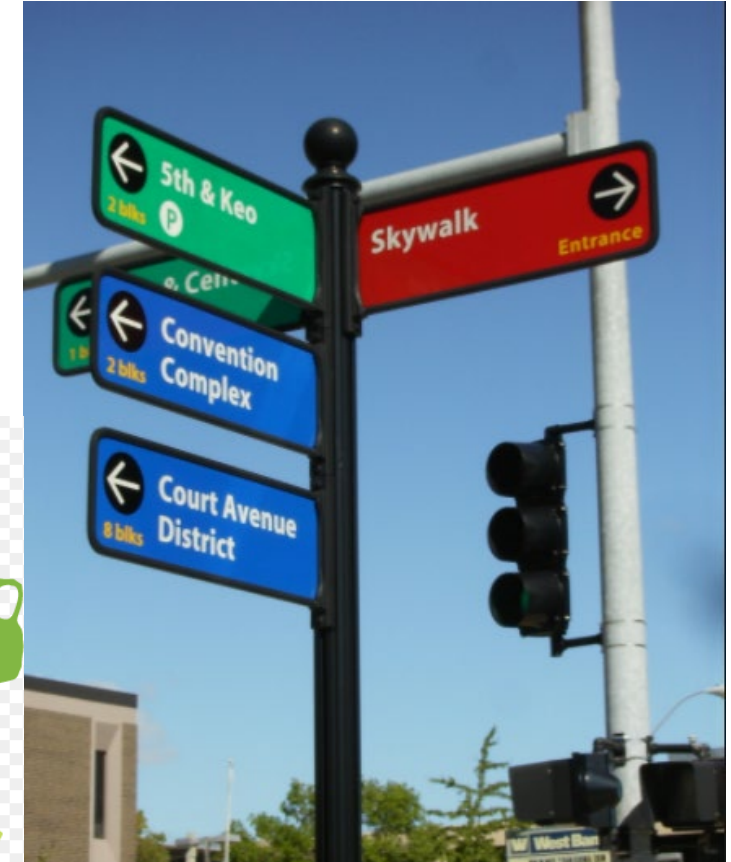
Regional Vision

➤ Complete Streets



➤ Regional Wayfinding

➤ Niagara-Hamilton Trade
Corridor



Thank-you